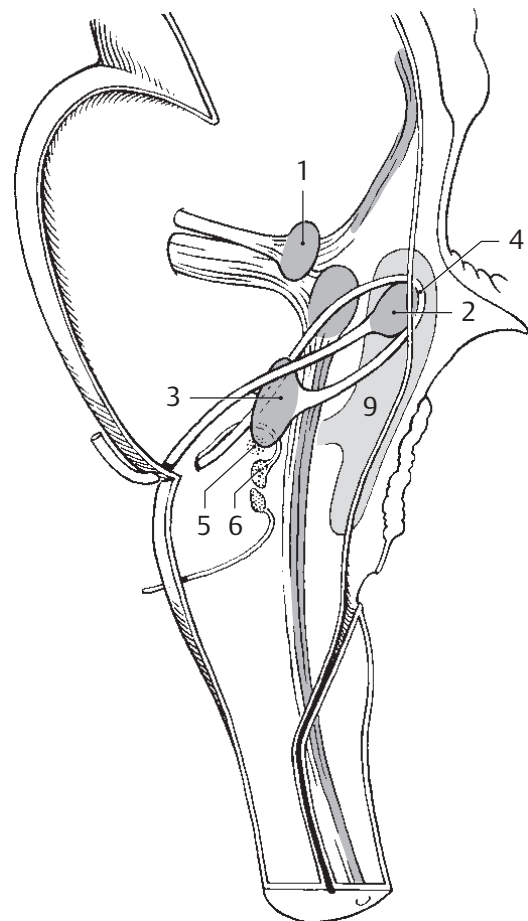
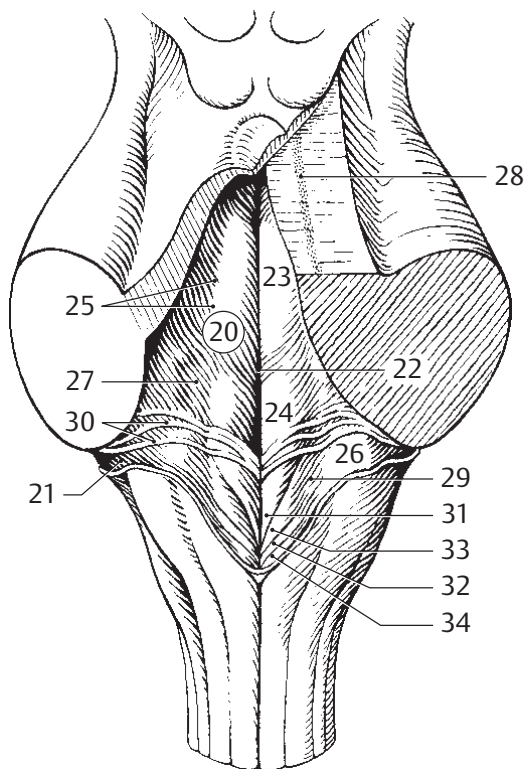


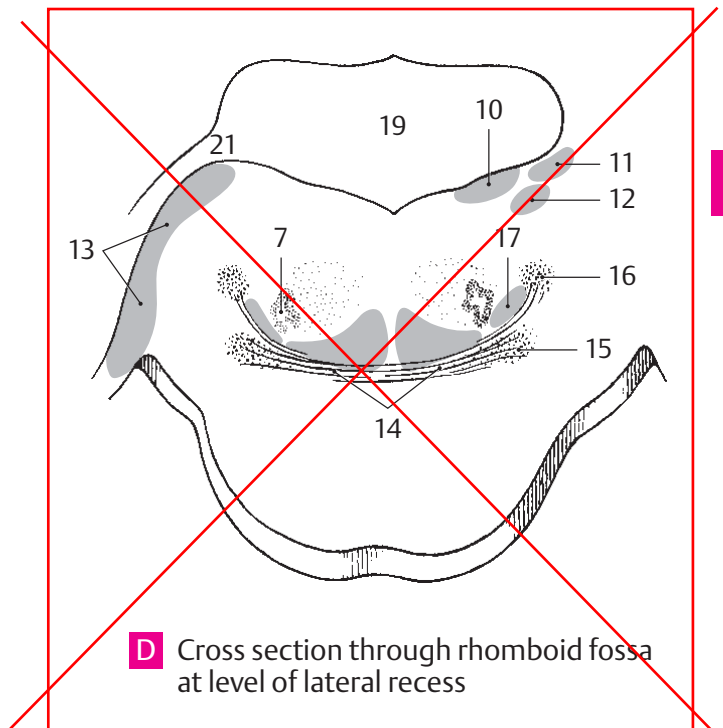
A Rhomboid fossa



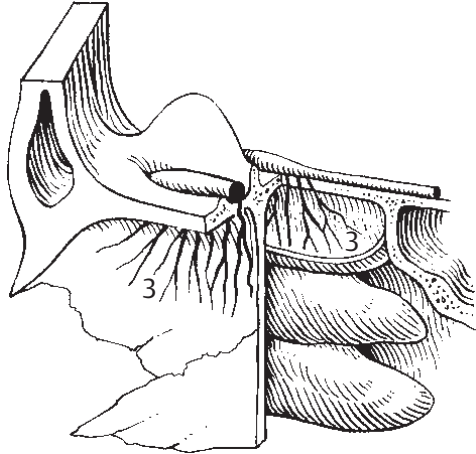
B Nuclei of rhombencephalon
medial view



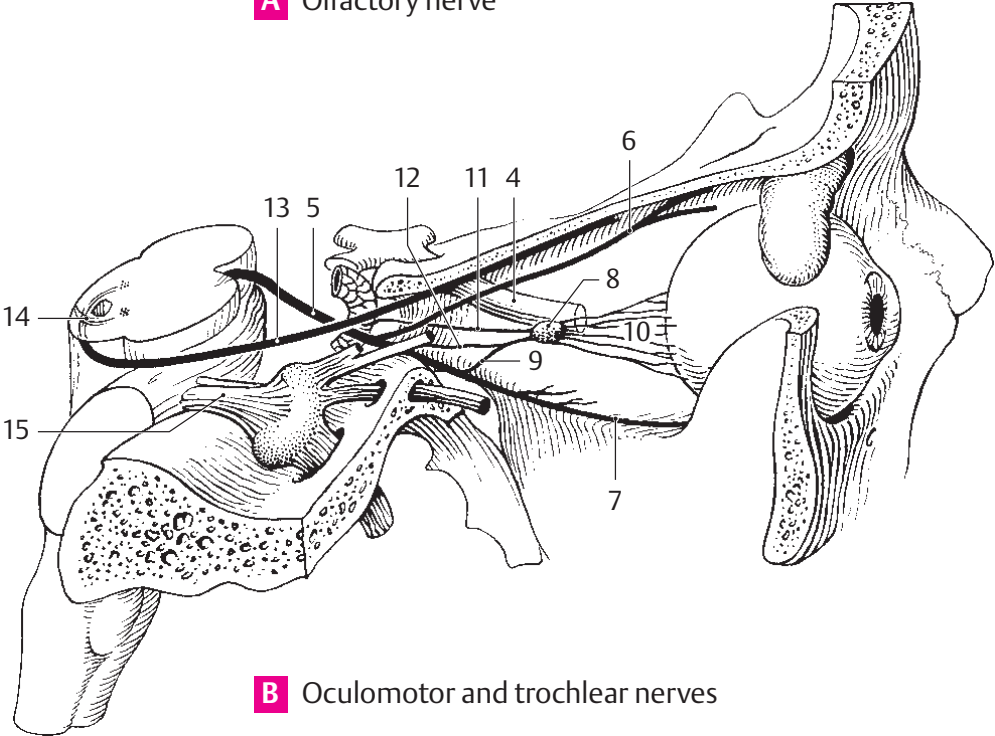
C Rhomboid fossa



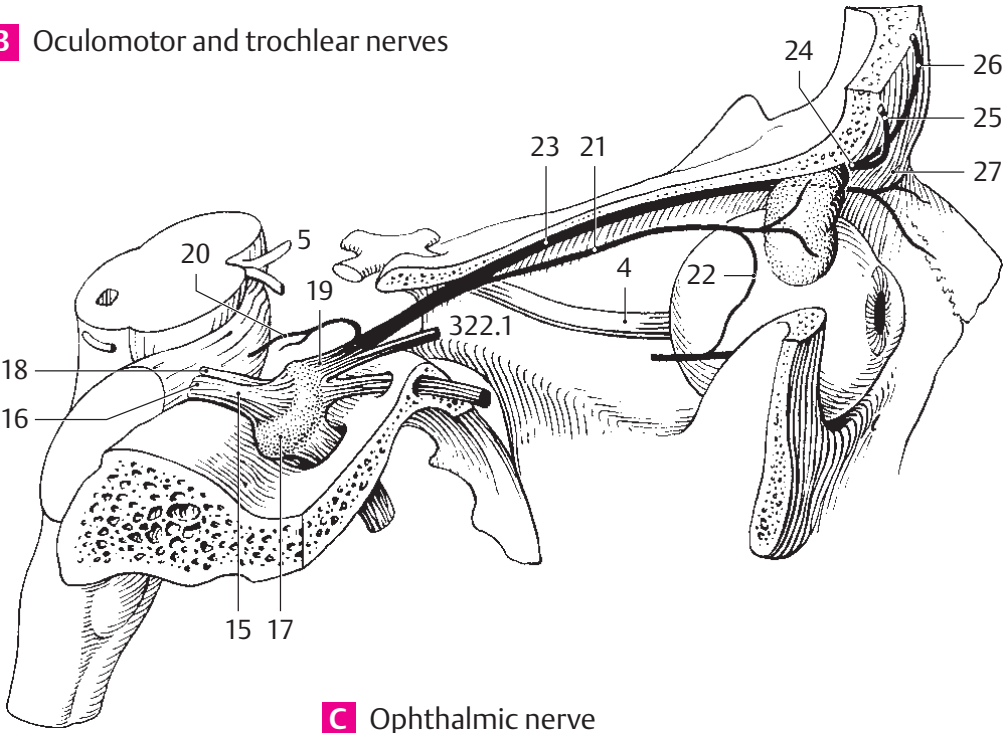
D Cross section through rhomboid fossa
at level of lateral recess



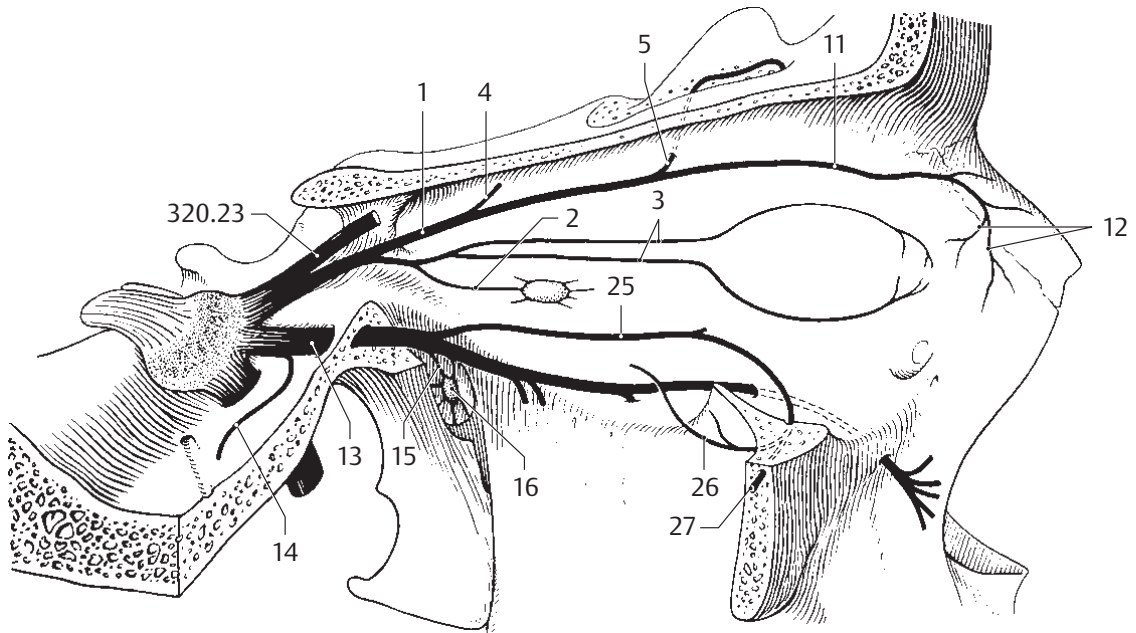
A Olfactory nerve



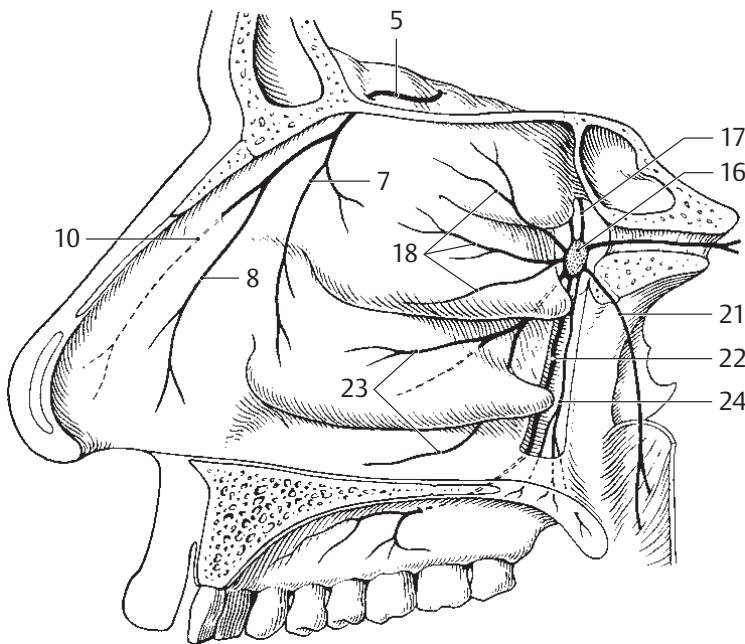
B Oculomotor and trochlear nerves



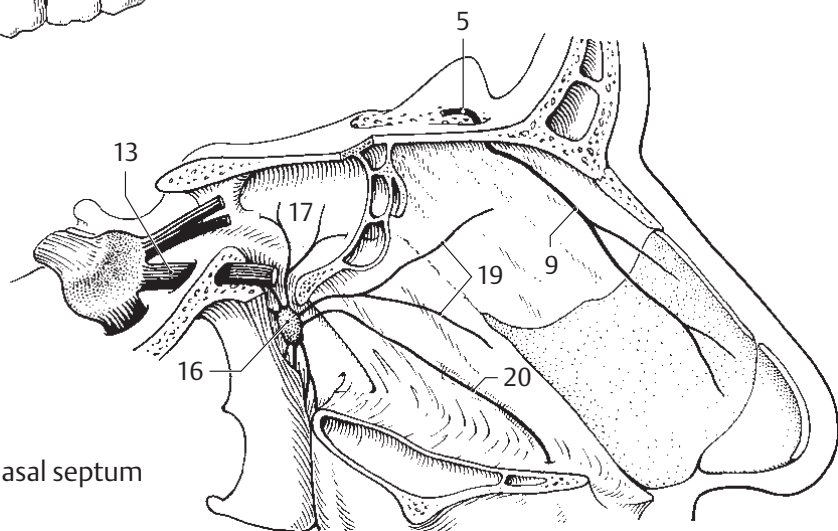
C Ophthalmic nerve



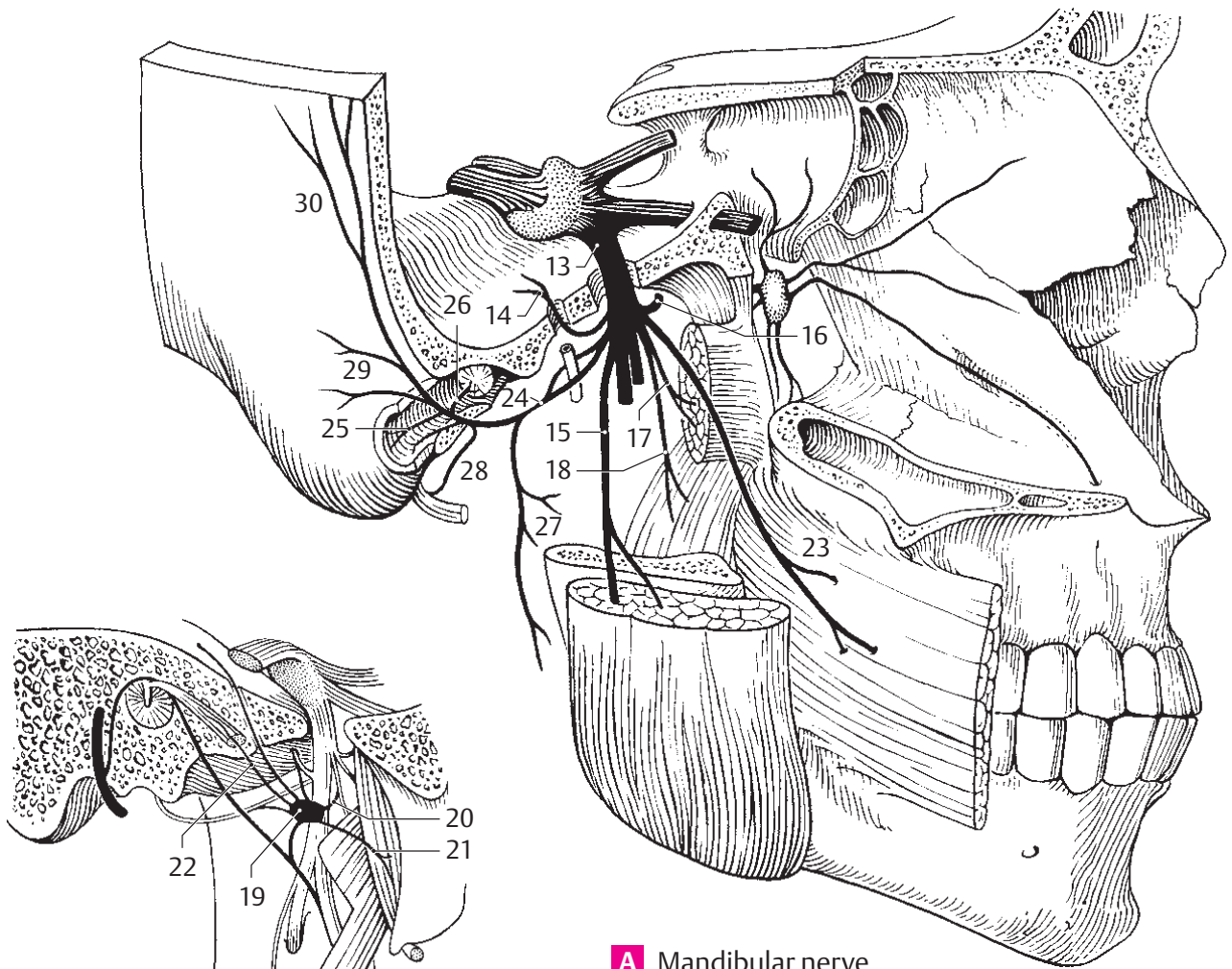
A Nasociliary and maxillary nerves



B Pterygopalatine ganglion and anterior ethmoidal nerve

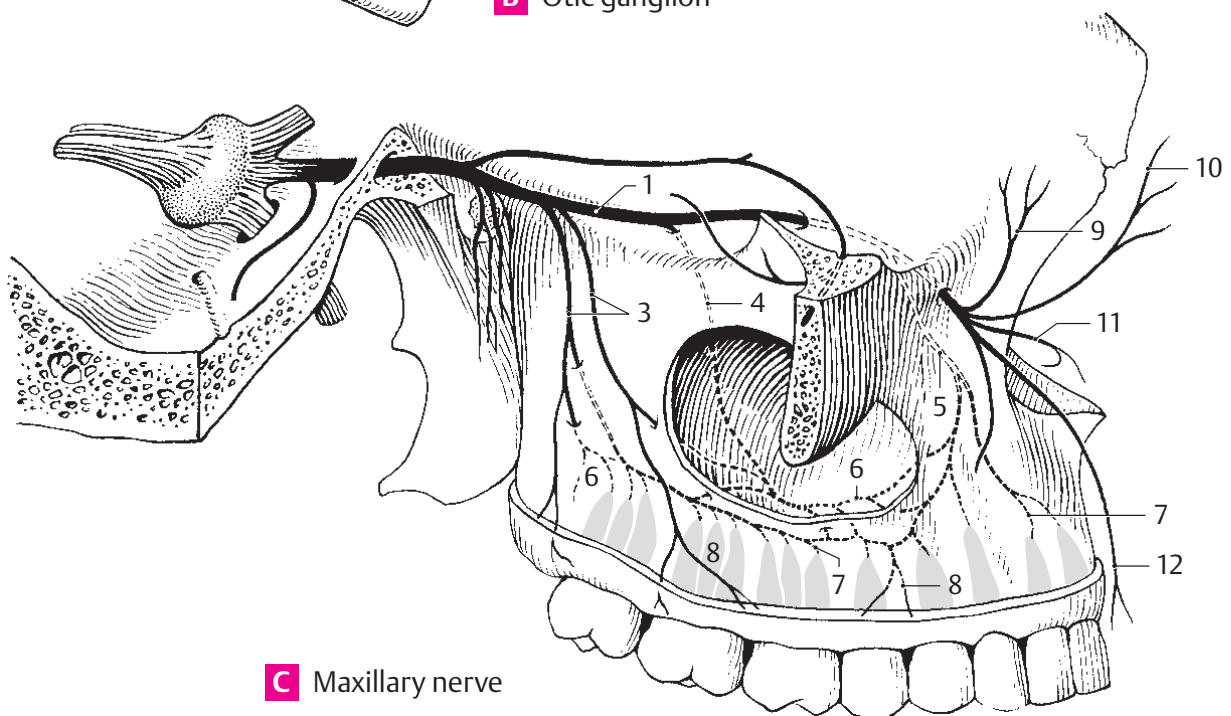


C Nerves of nasal septum

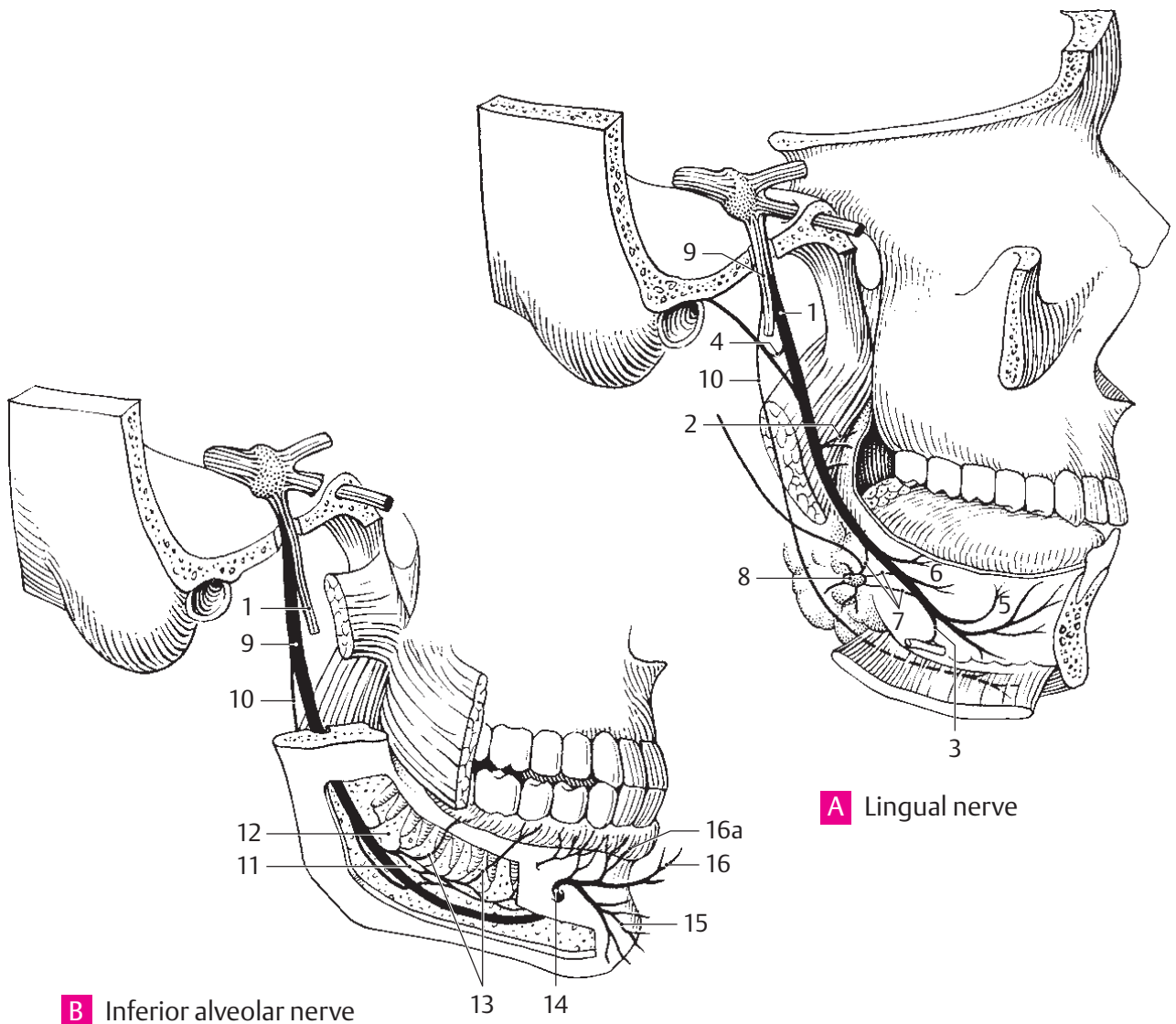


A Mandibular nerve

B Otic ganglion

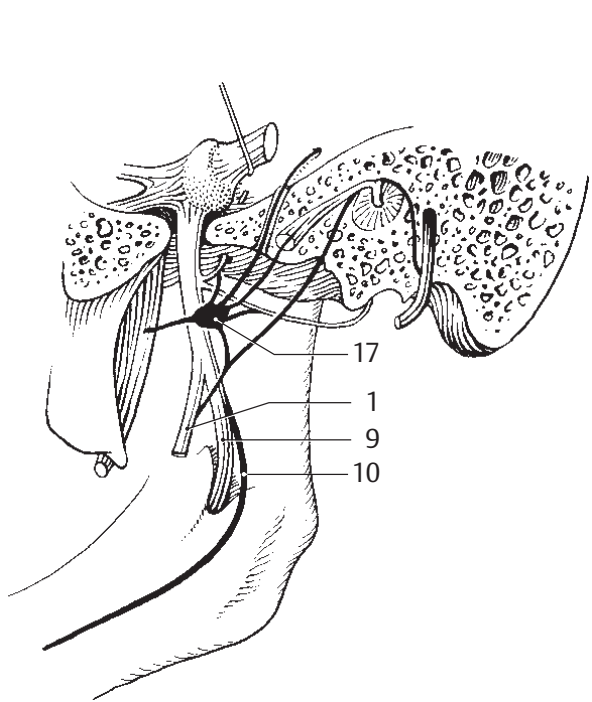


C Maxillary nerve

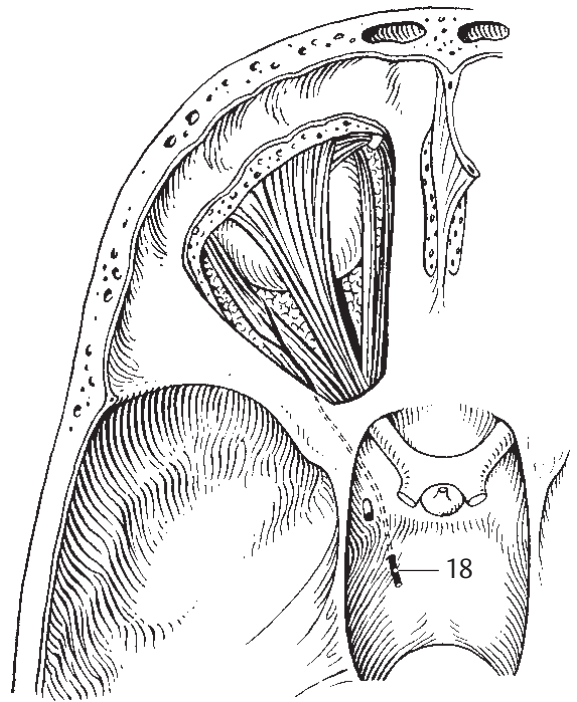


A Lingual nerve

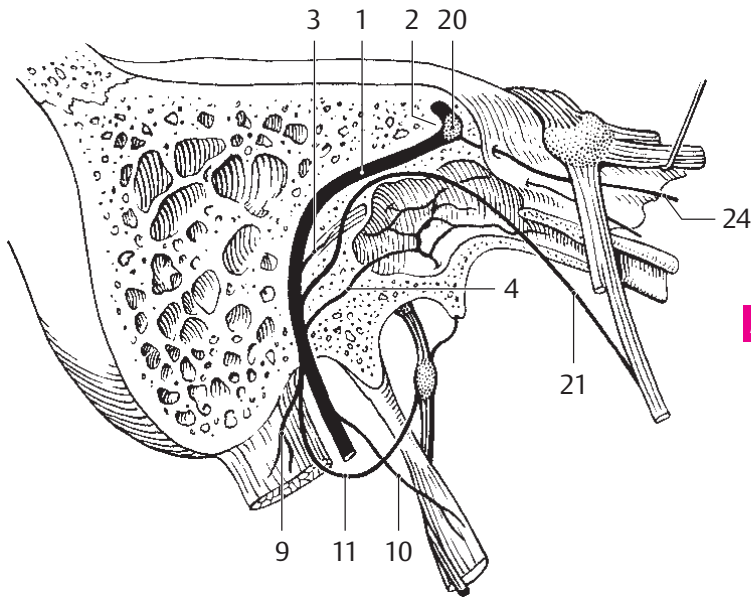
B Inferior alveolar nerve



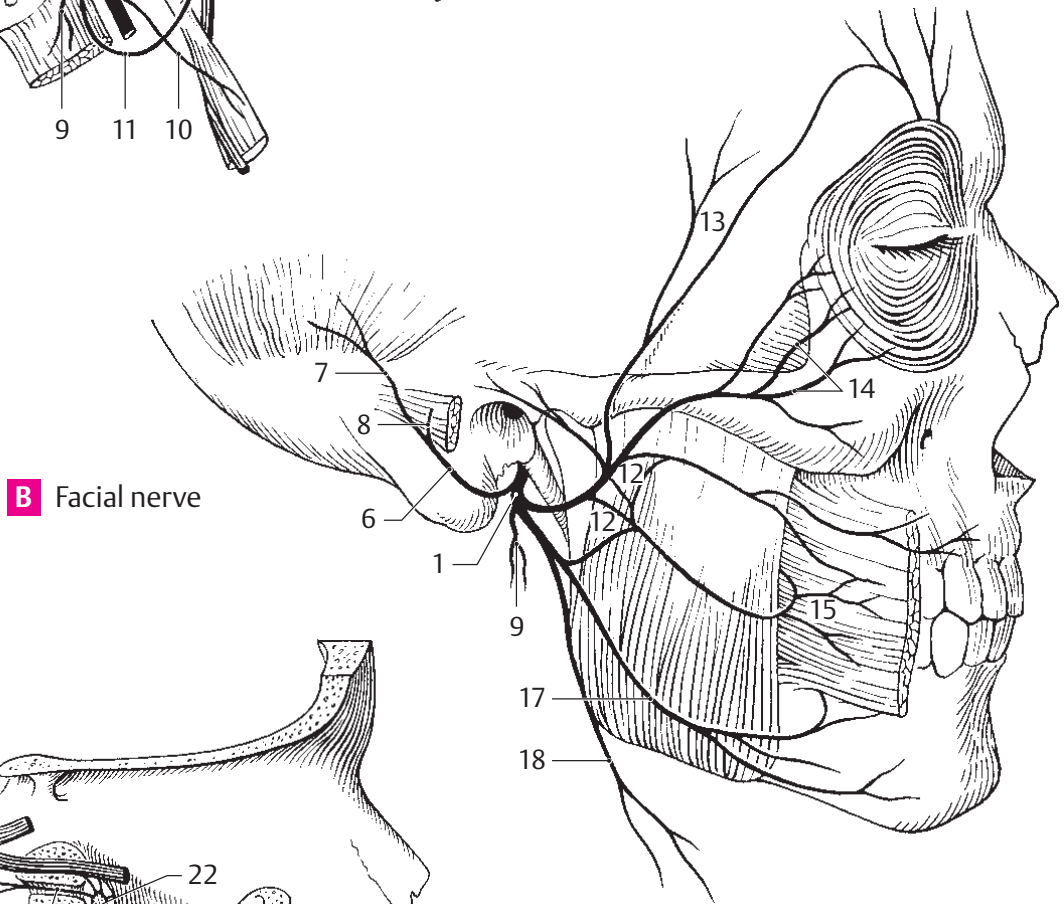
C Otic ganglion and branches



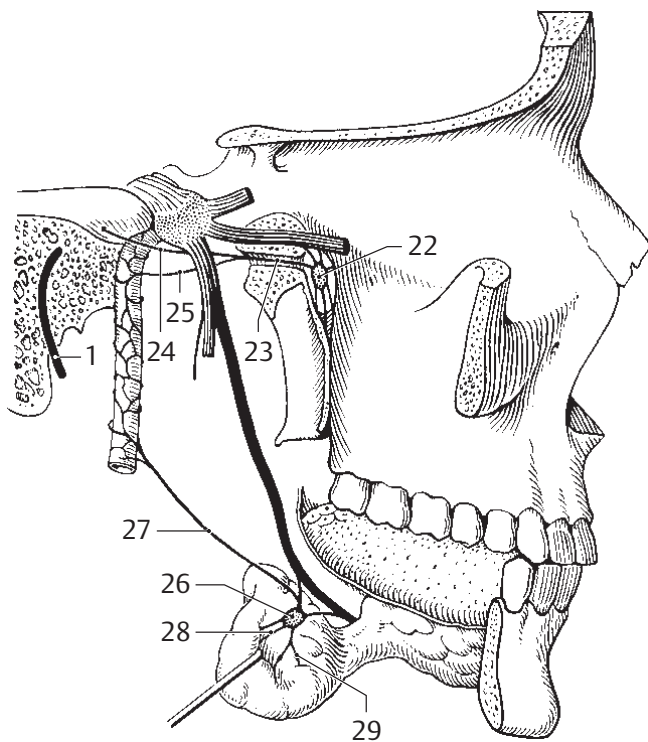
D Abducent nerve



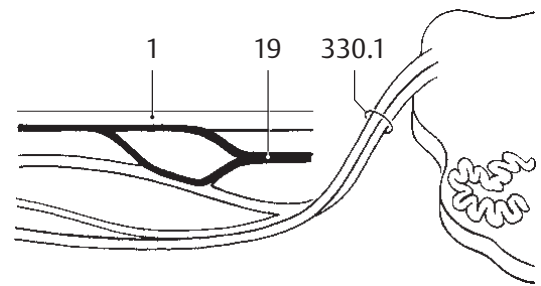
A Facial nerve in temporal bone



B Facial nerve

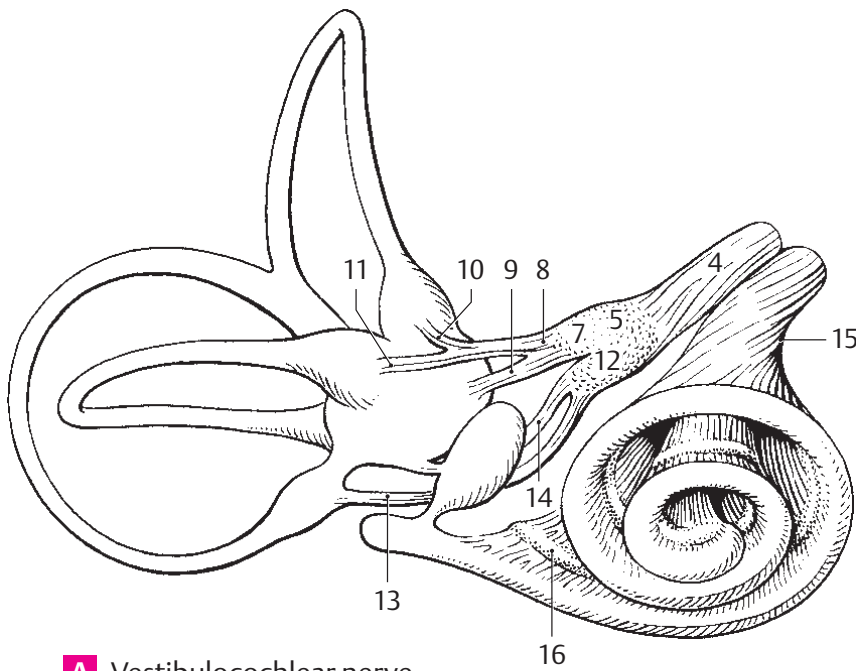


C Pterygopalatine and submandibular ganglia

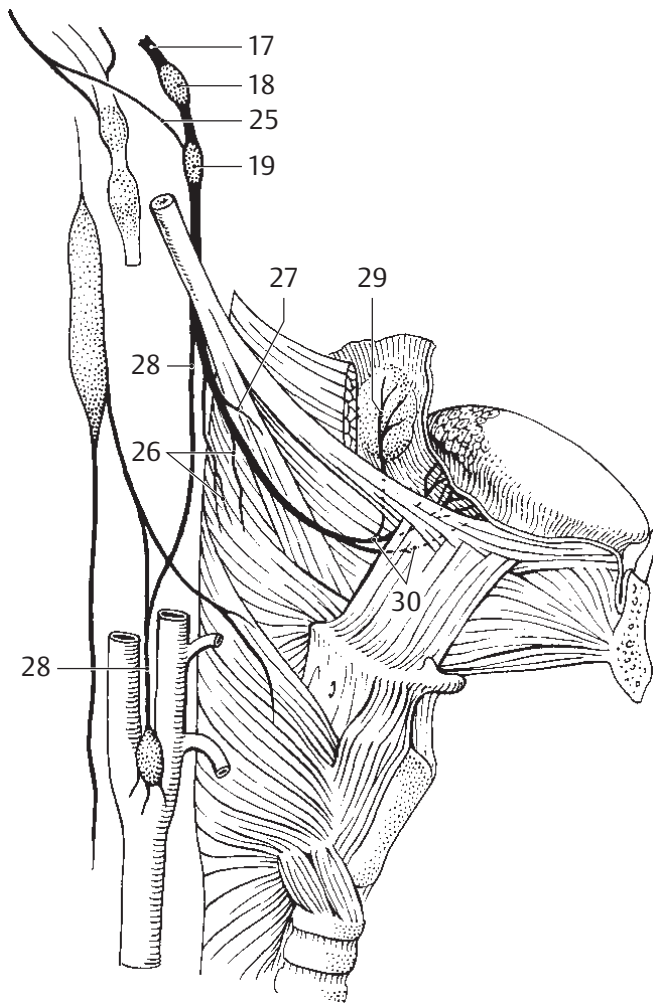
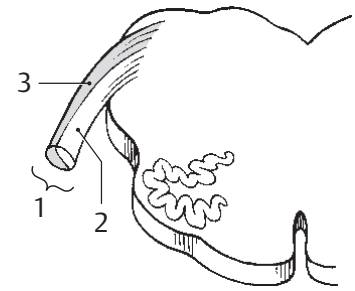


D Facial and vestibulocochlear nerves

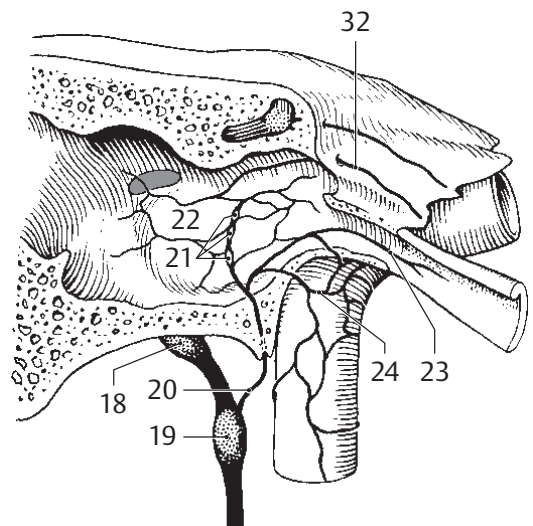
18



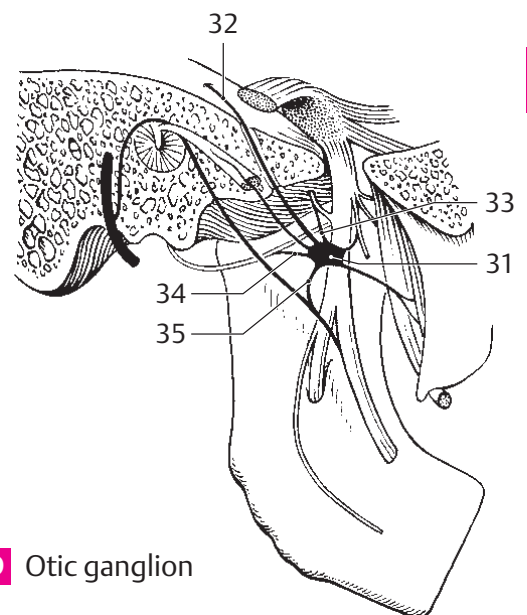
A Vestibulocochlear nerve, schematic



B Glossopharyngeal and vagus nerves



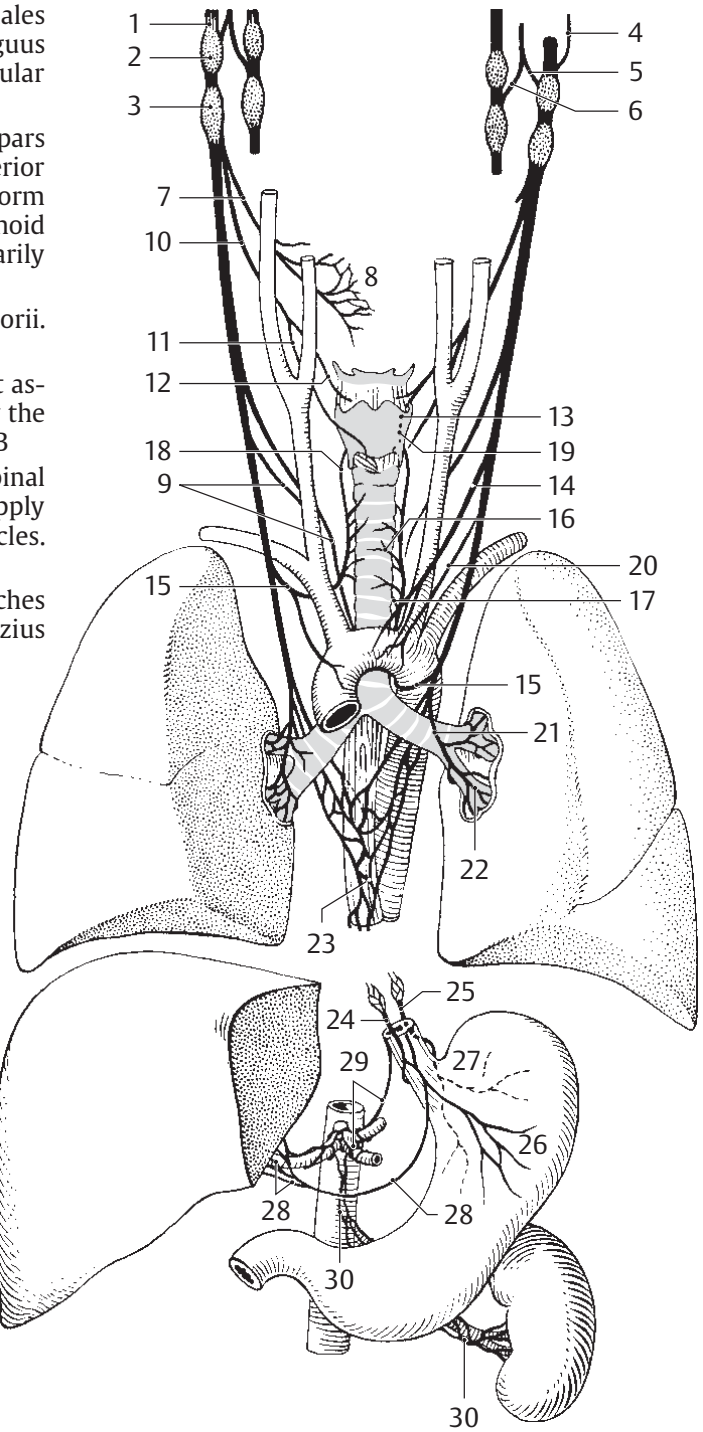
C Tympanic nerve with branches



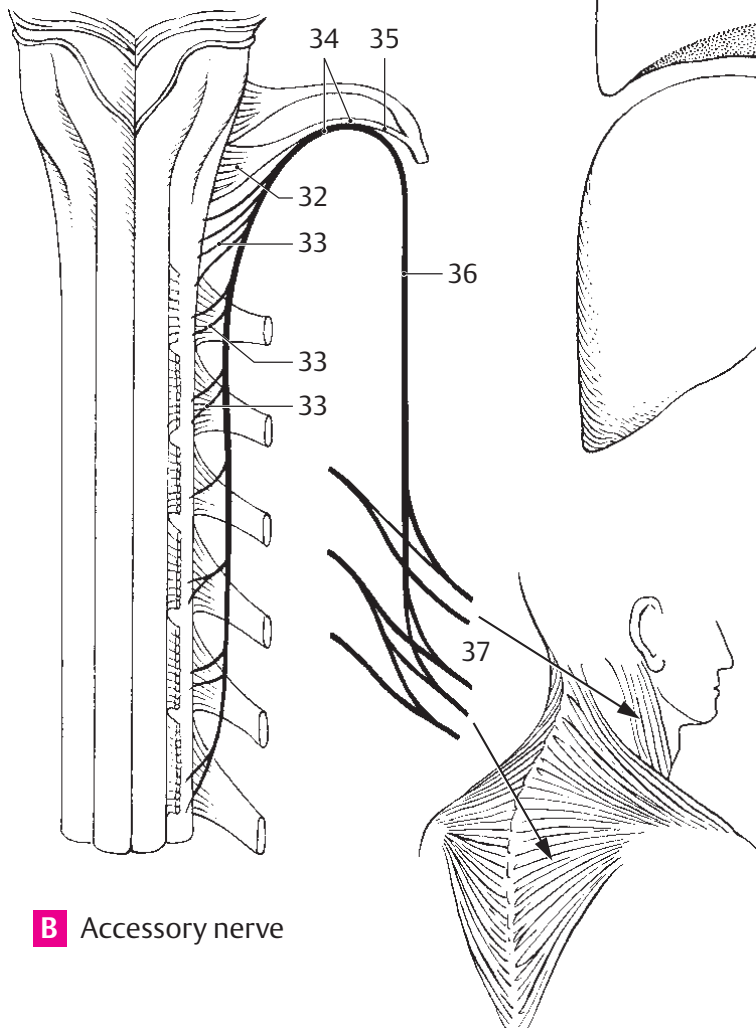
D Otic ganglion

18

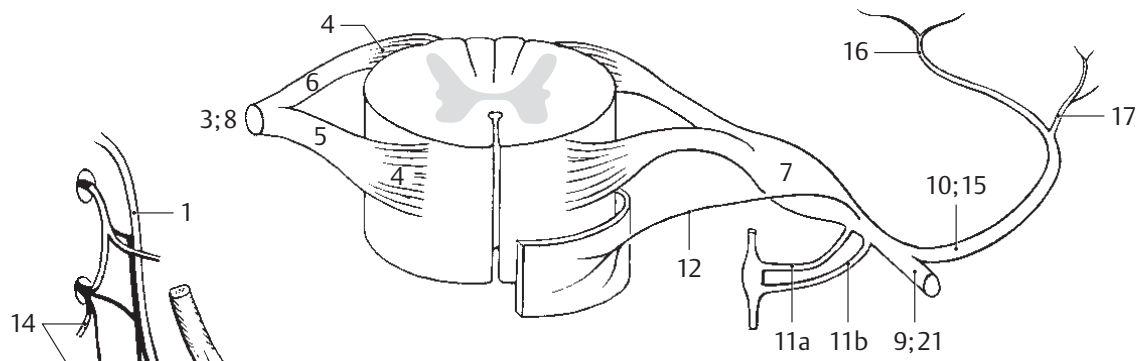
- 32 **Cranial roots (vagal part).** Radices craniales (pars vagalis). Fibers from the nucleus ambiguus which leave the accessory nerve in the jugular foramen and join the vagus nerve. B
- 33 **Spinal roots (spinal part).** Radices spinales (pars spinalis). They arise from the base of the anterior horn of the cervical spinal cord (C1–6) and form a trunk which ascends into the subarachnoid space of the skull where it unites temporarily with fibers from the cranial roots. B
- 34 **Accessory nerve trunk.** Truncus nervi accessorii. It is formed by the union of both roots. B
- 35 **Internal branch.** Ramus internus. Fiber tract associated with the vagus nerve and formed by the united cranial roots of the accessory nerve. B
- 36 **External branch.** Ramus externus. United spinal root fibers of the accessory nerve. They supply the sternocleidomastoid and trapezius muscles. B
- 37 **Muscular branches.** Rami musculares. Branches supplying the sternocleidomastoid and trapezius muscles. B



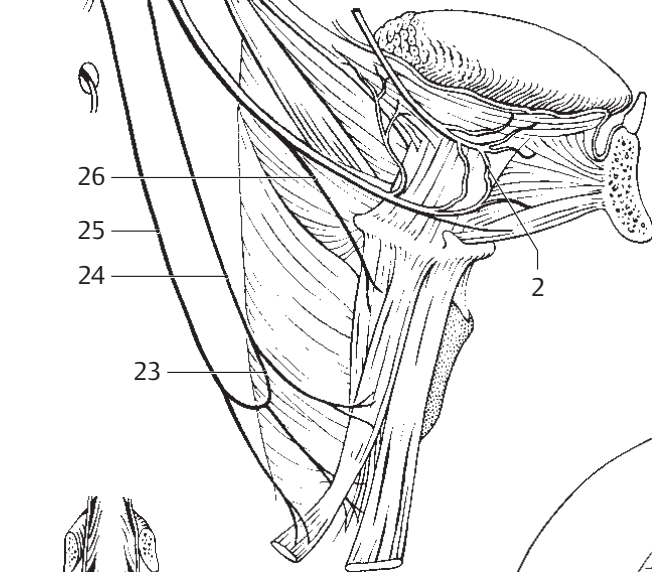
A Vagus nerves with branches



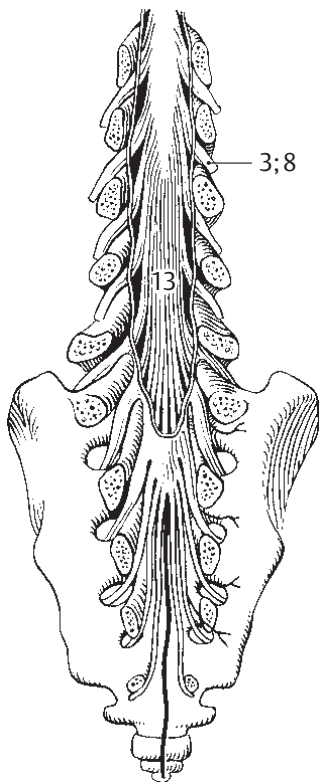
B Accessory nerve



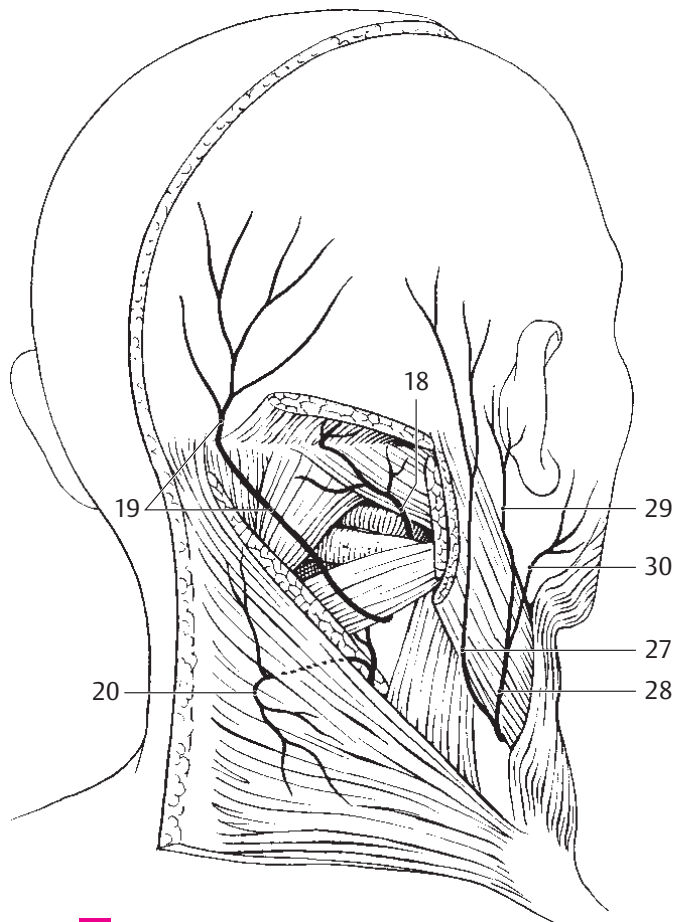
A Spinal nerve with roots and branches



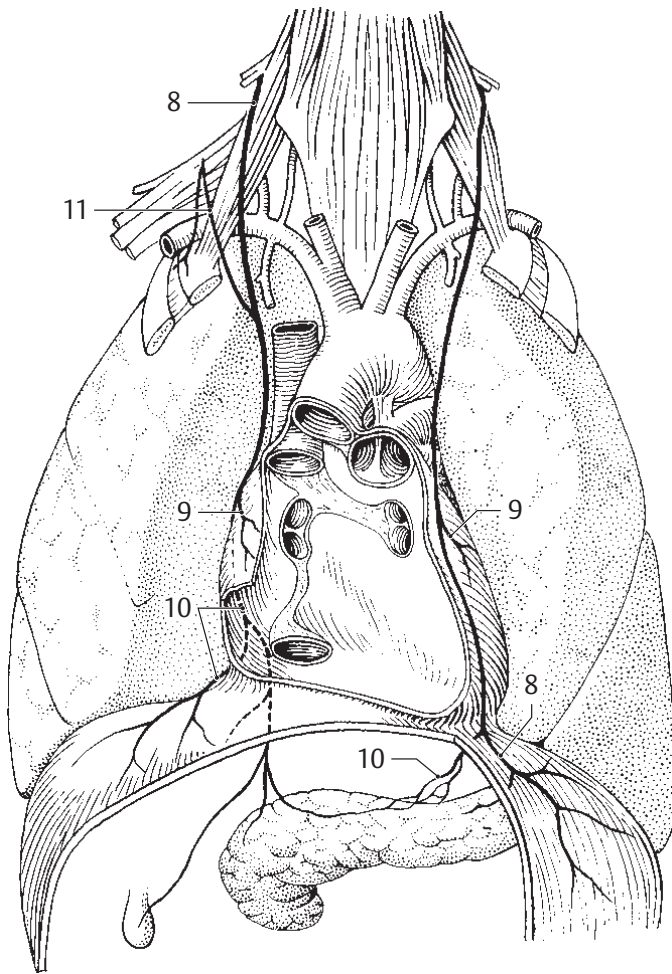
B Hypoglossal nerve and ansa cervicalis



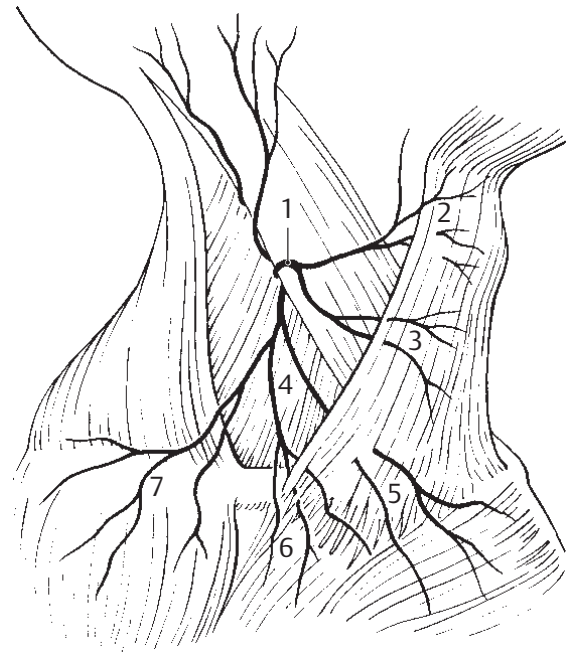
C Cauda equina



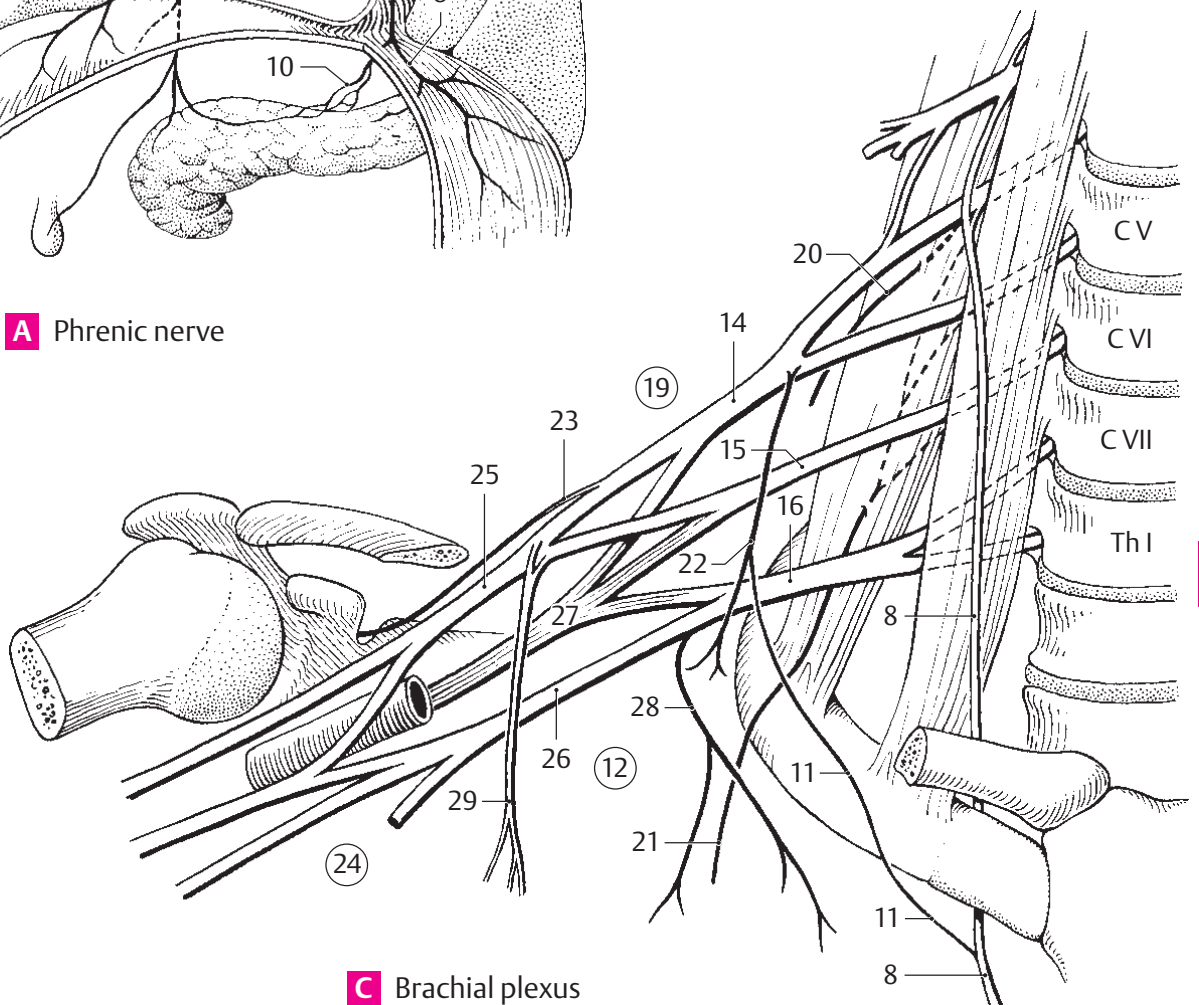
D Nerves of the nape of the neck



A Phrenic nerve



B Nerves forming the "nerve point"



C Brachial plexus