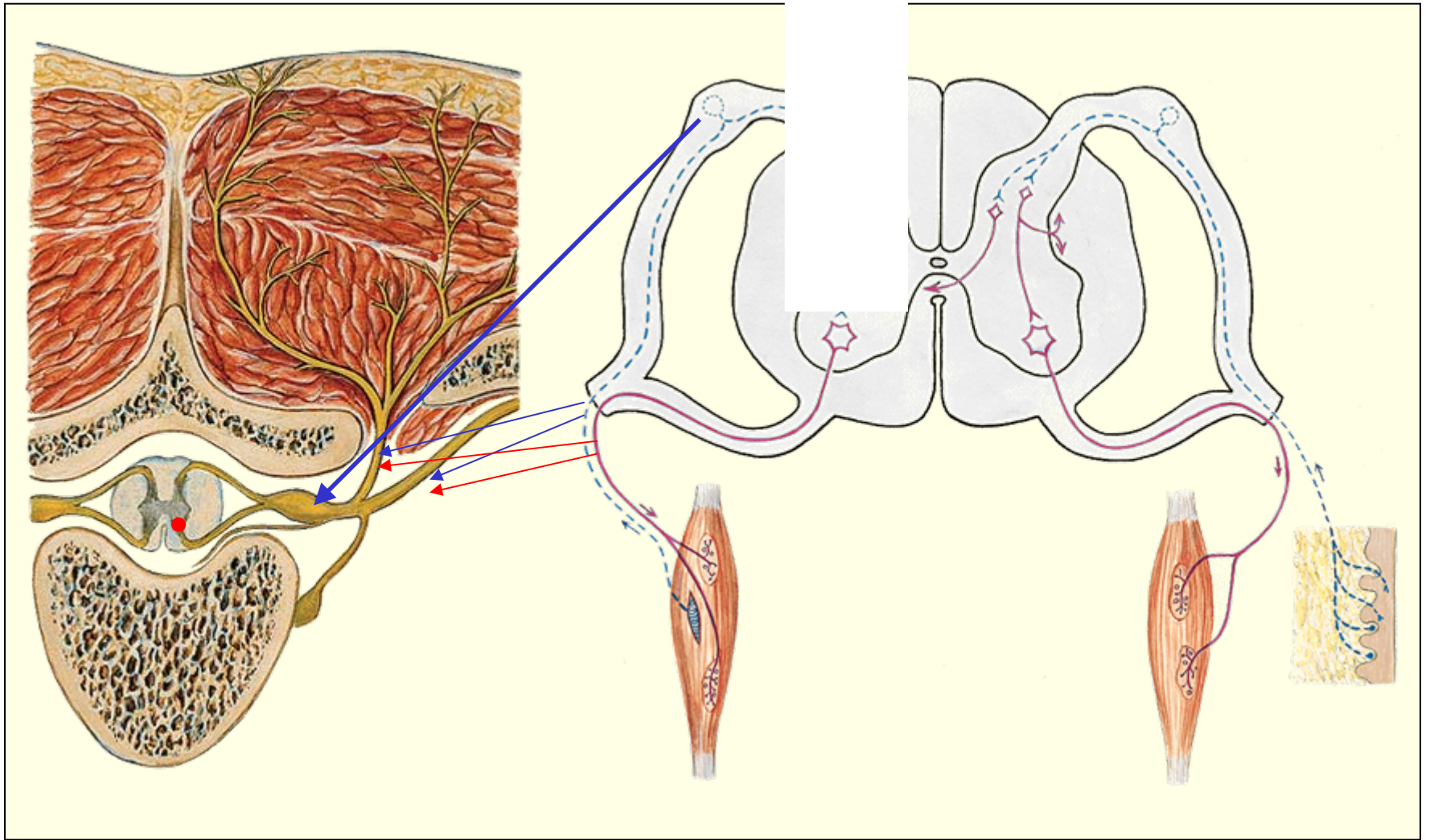
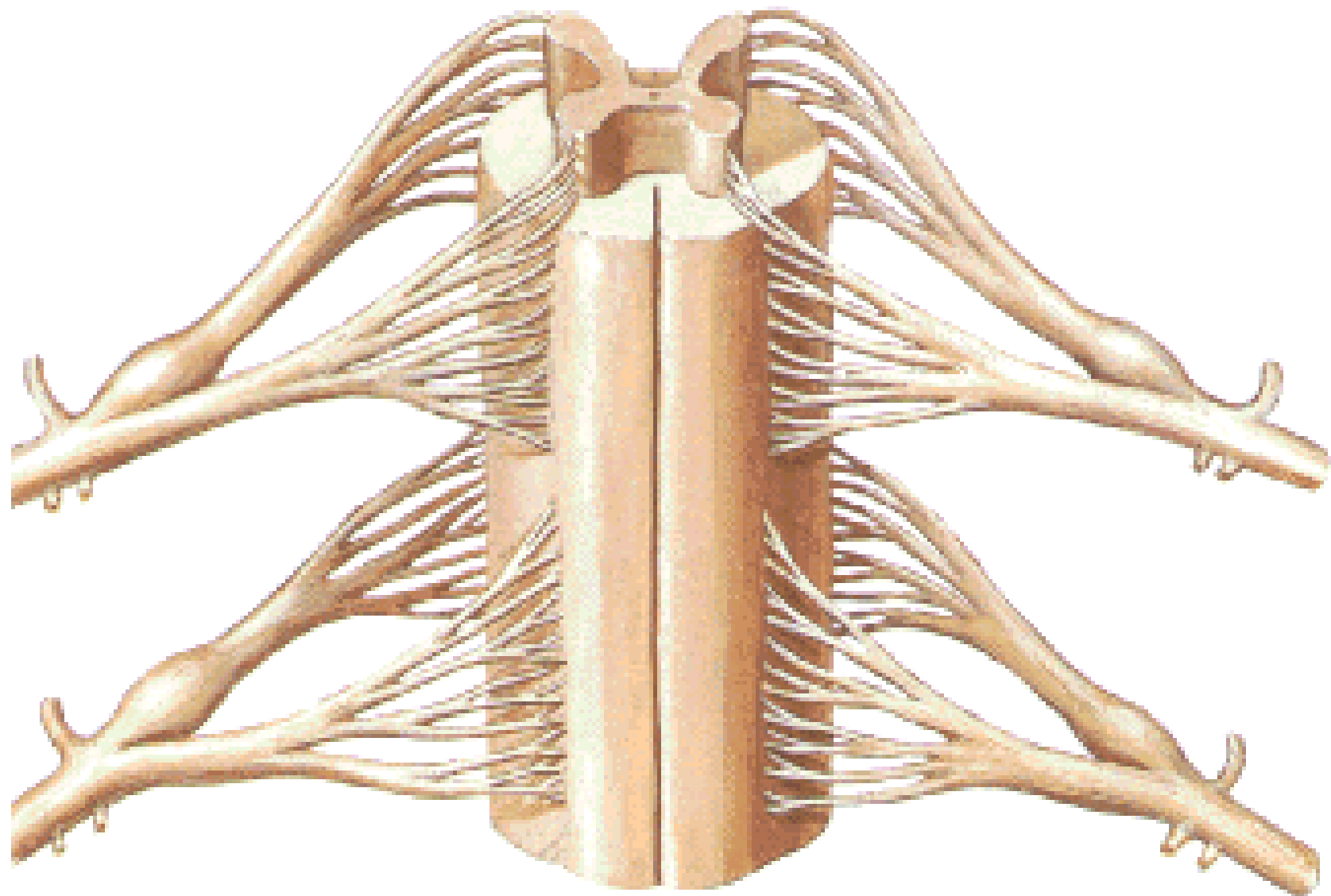
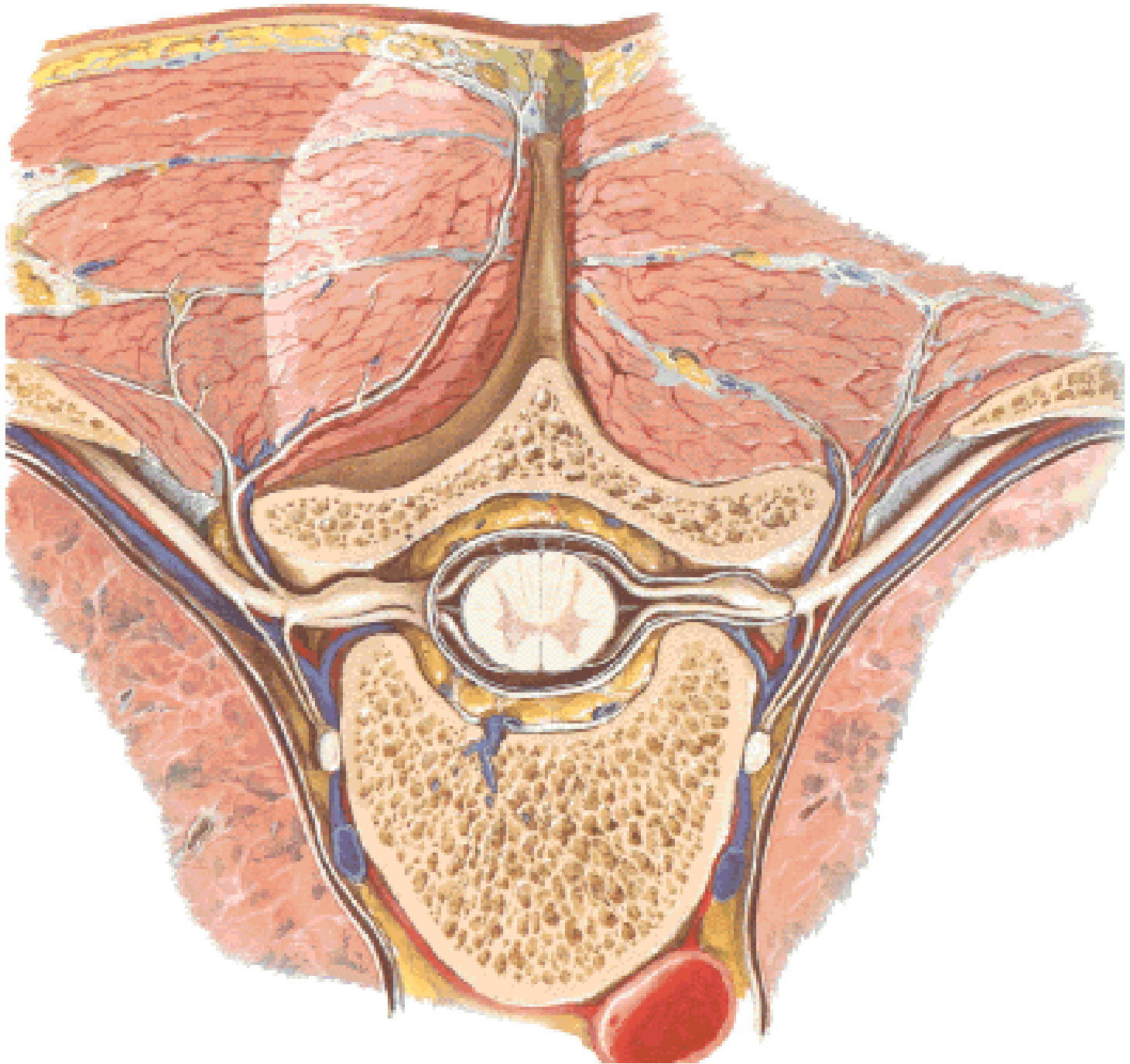
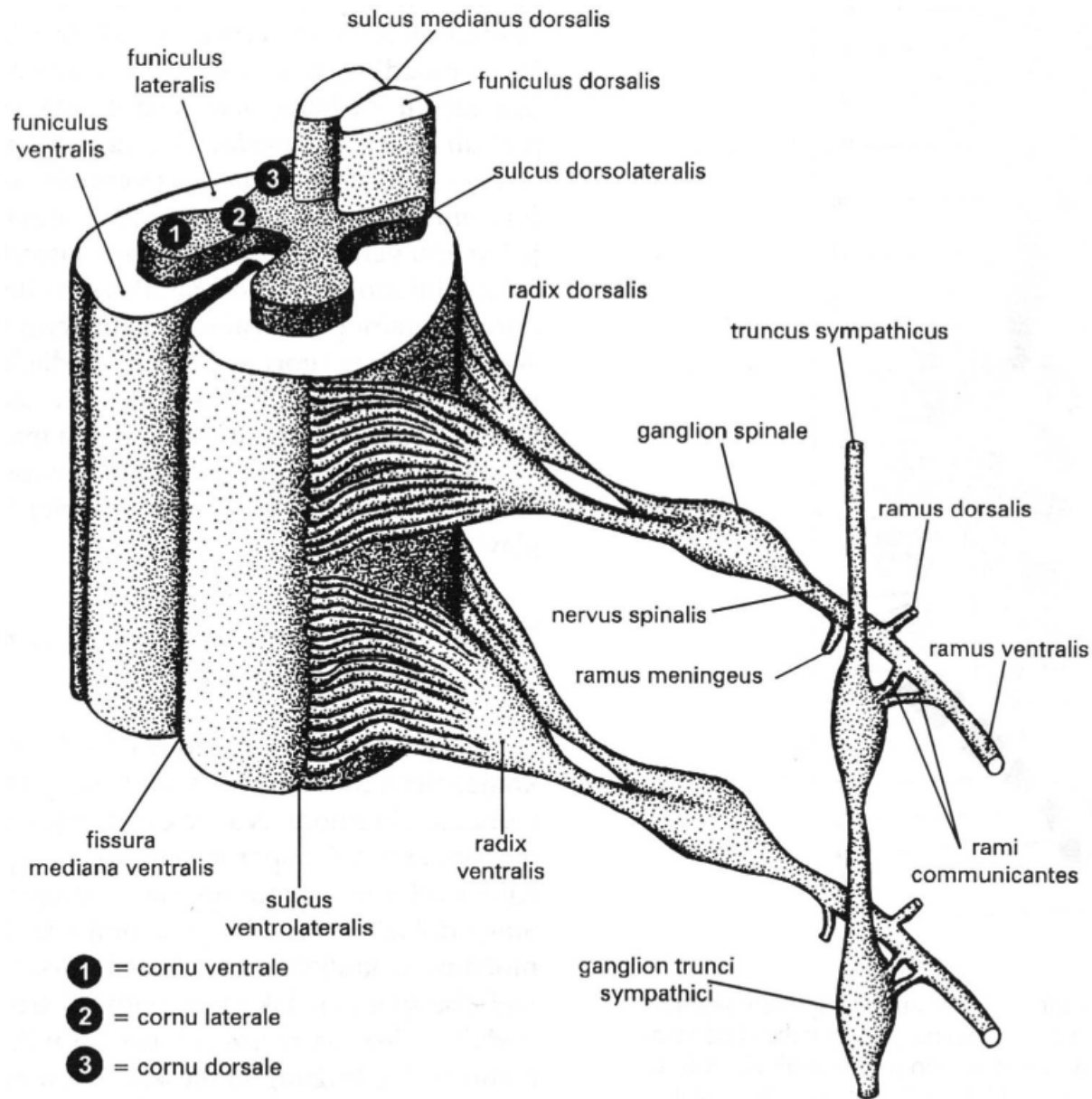


- **A2S2 - Opći principi organizacije perifernog živčanog sustava**









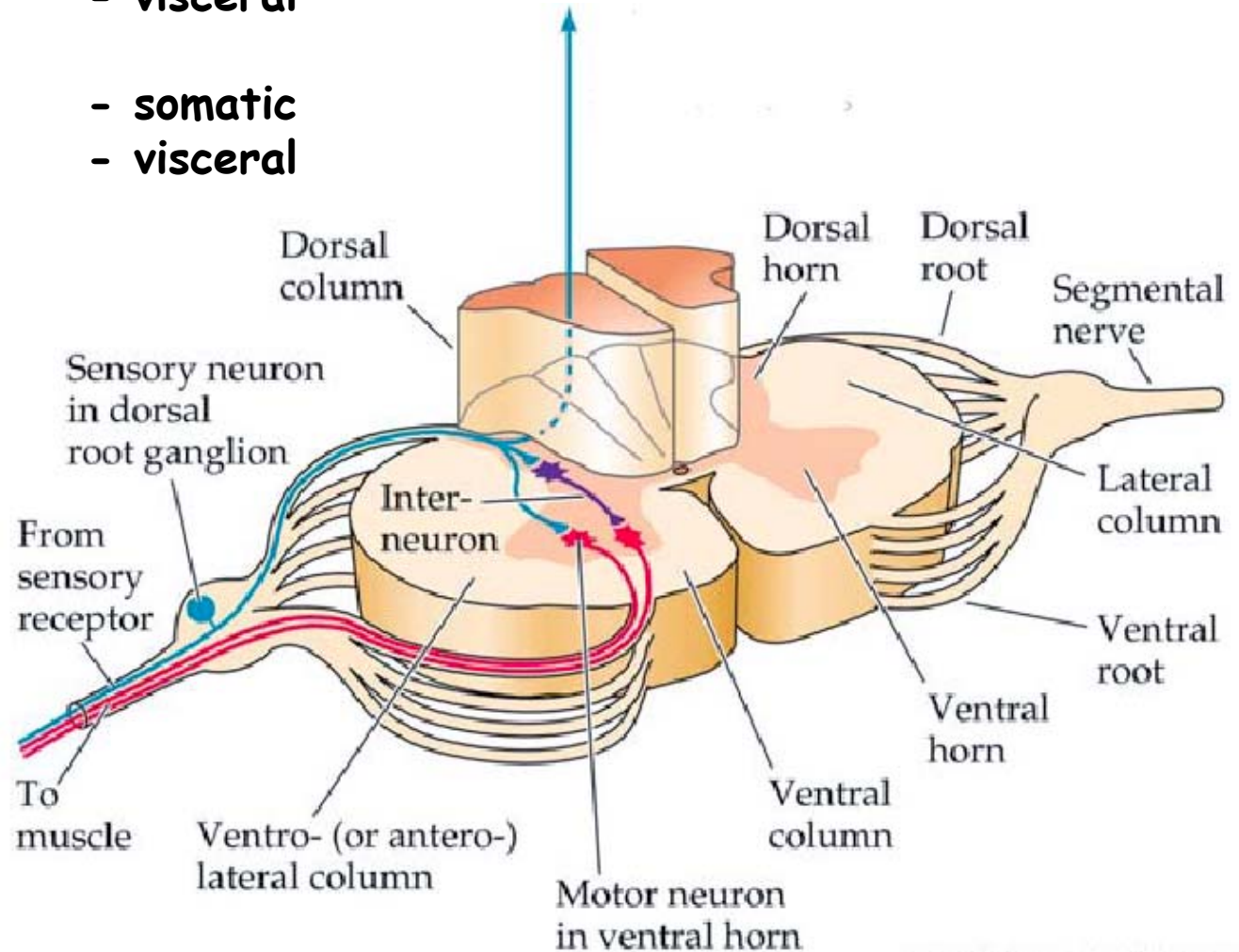
Slika 4-2. Temeljni dijelovi sive i bijele tvari kraljeznične moždine. Za pojedinosti vidi tekst.

EFFERENT/motor

- somatic
- visceral

AFFERENT/sensory

- somatic
- visceral



Somatic - ectoderm (superficial mesoderm)

Visceral - endoderm (deep mesoderm)

CNS

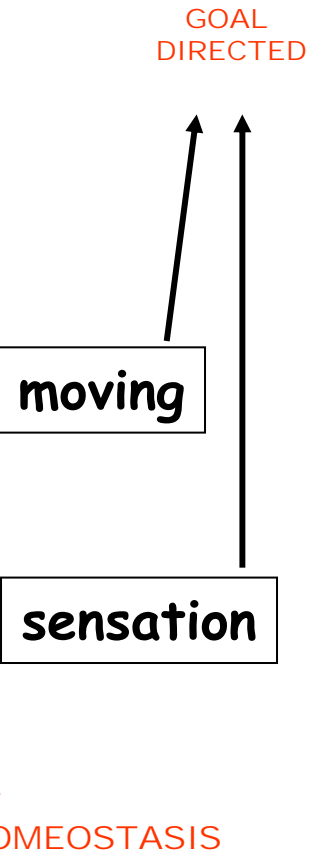
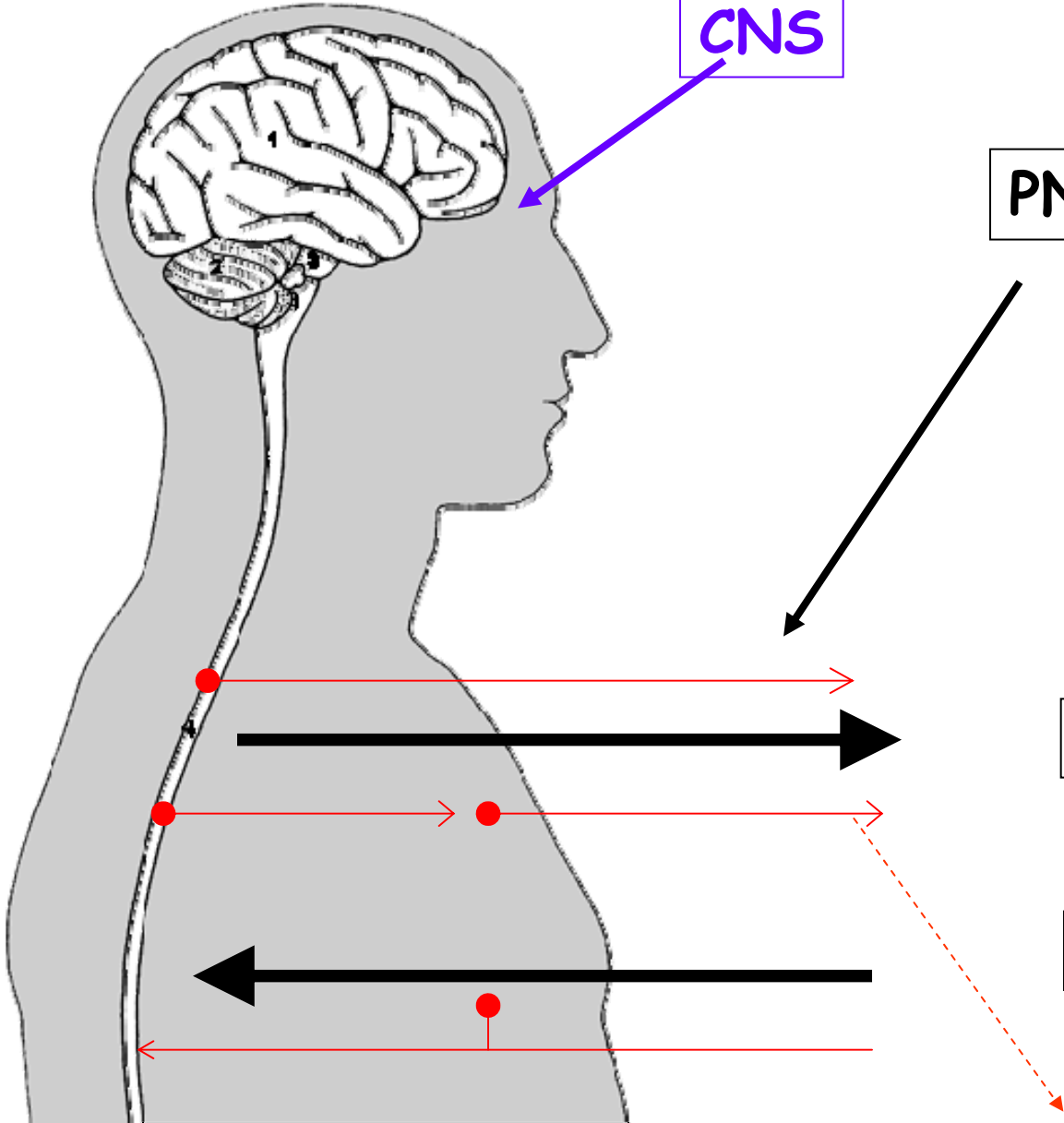
PNS

GOAL DIRECTED

moving

sensation

HOMEOSTASIS



- OSA
- OVA
- OSE
- OVE

kožni receptor

skeletni mišić

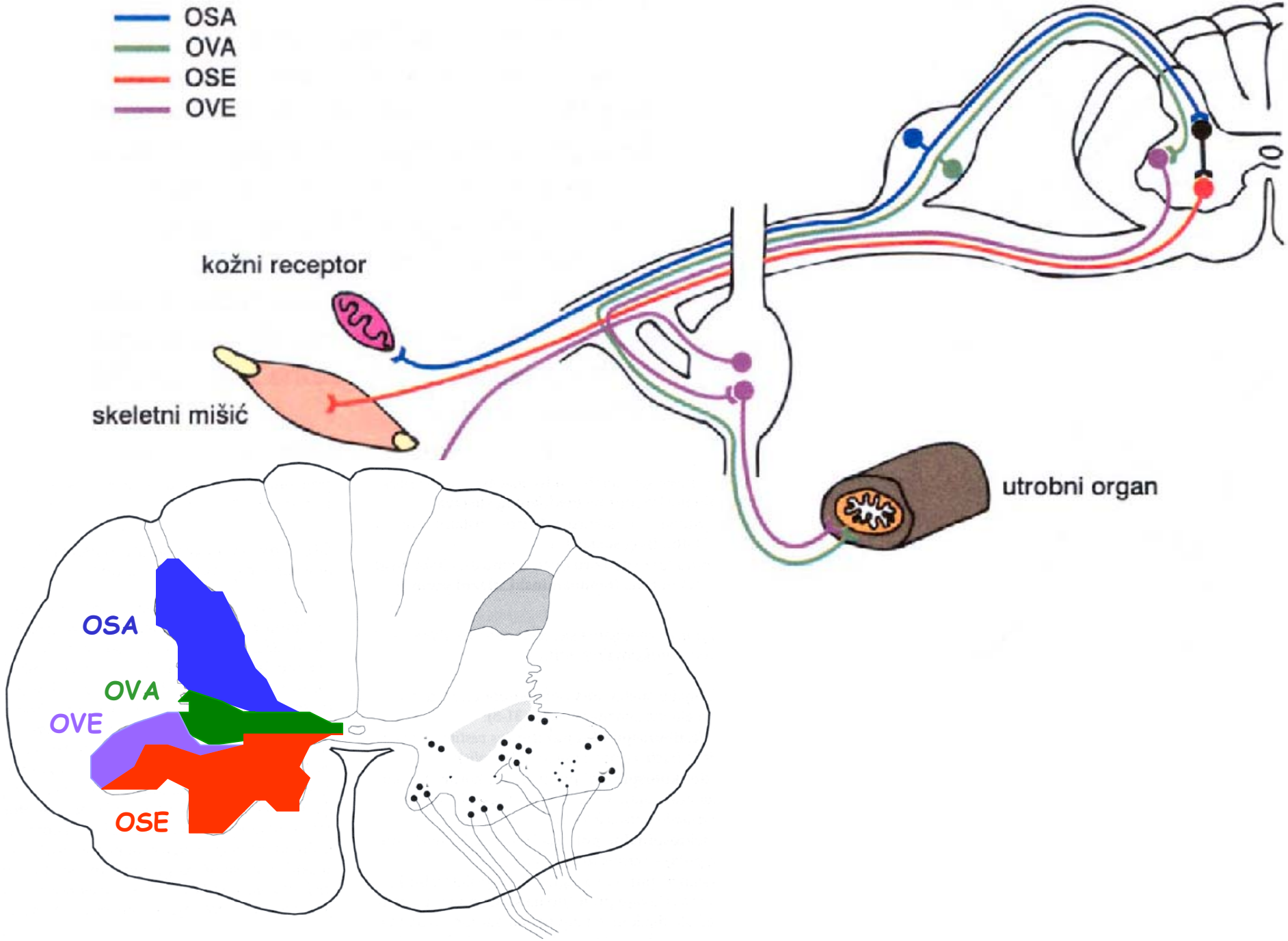
utrobni organ

OSA

OVA

OVE

OSE



SŽS PŽS

MOTORNO
somatomotorno



POPREČNOPRU-
GASTI
SKELETNI
MIŠIČI

MOTORNO
brahiomotorno
(visceromotorno)



POPREČNOPRU-
GASTI MIŠIČI
ŠKRŽNIH
LUKOVA

AUTONOMNO
visceromotorno

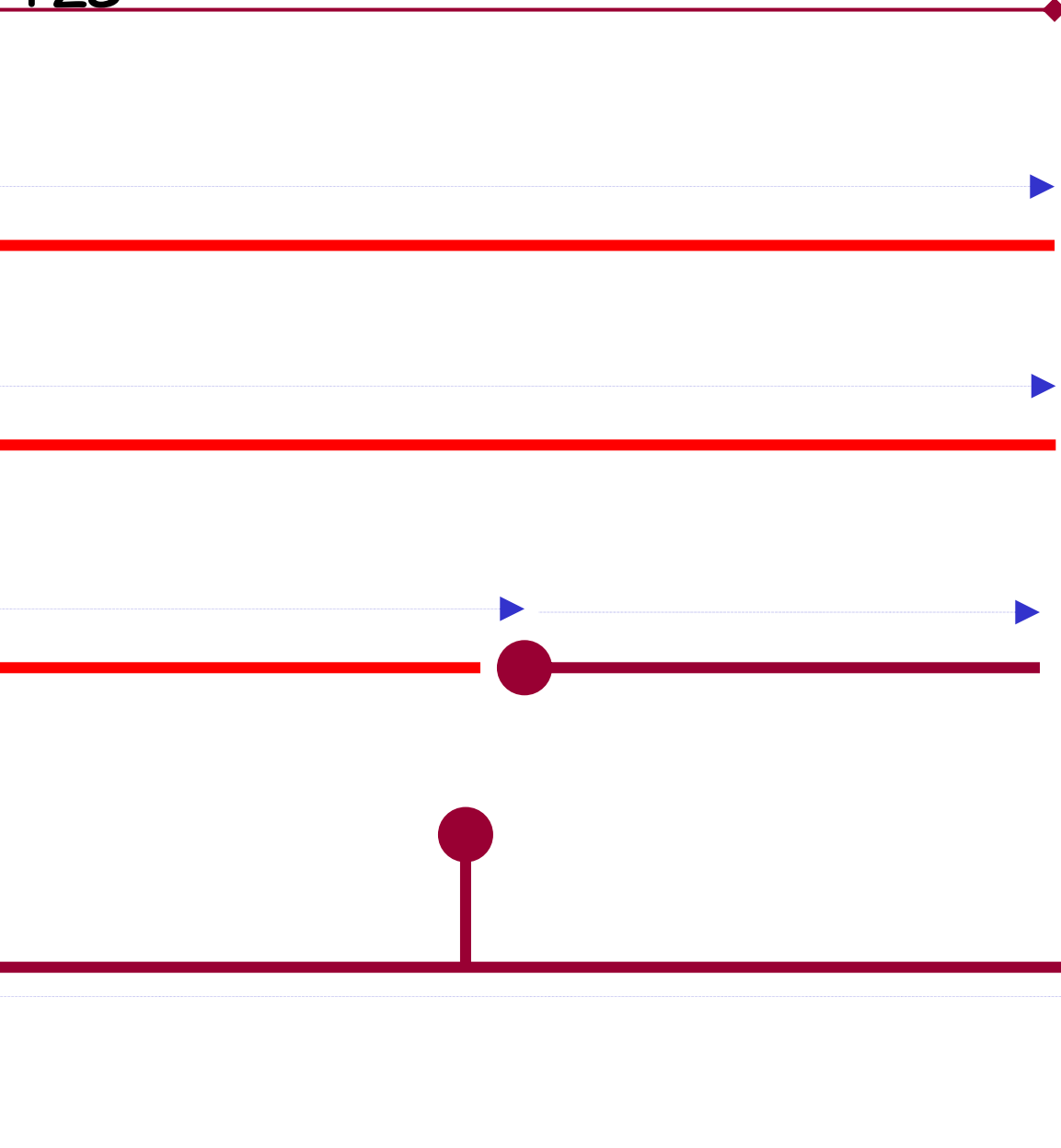
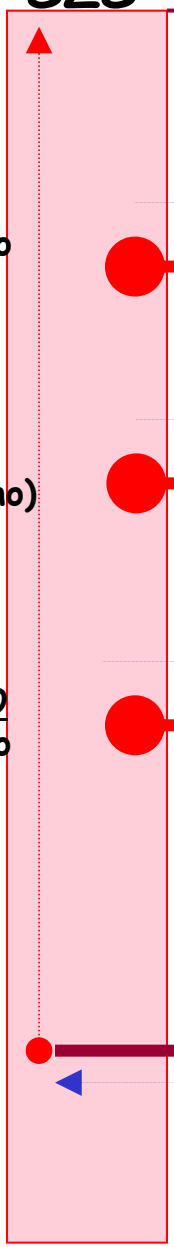


GLATKI MIŠIČI
ŽLIJEZDE

SENZIBILNO

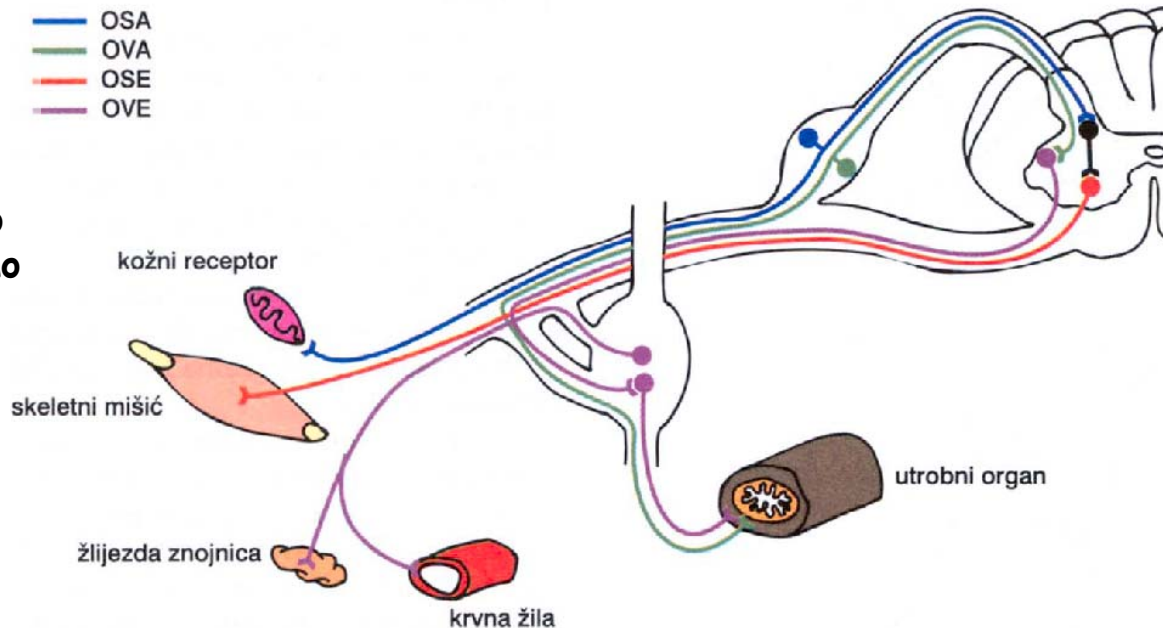


RECEPTOR



EFERENTNO/motorno - somatsko
- visceralno

AFERENTNO/senzibilno - somatsko
- visceralno



Funkcije moždanih živaca

(OSE)	Opća somatska eferentna: inervacija skeletnih mišića trupa i ekstremiteta (III,IV,VI,XII)
(OVE)	Opća visceralna eferentna: inervacija glatkih mišića, žlijezda i organa (III,VII,IX,X)*
(PVE)	Posebna visceralna eferentna: inervacija poprečnoprugastih mišića što se razvijaju iz osnove ždrijelnih lukova ; mimični mišići, žvačni mišići, mišići ždrijela i grkljana, poprečnoprugasti mišići jednjaka, m. sternocleidomastoideus i m. trapezius (V,VII,IX,X,XI)
(OVA)	Opća visceralna aferentna: informacija iz organa i krvnih žila (IX,X)
(PVA)	Posebna visceralna aferentna: njuh i okus (I,VII,IX,XI)
(OSA)	Opća somatska aferentna: receptori u koži i lokomotornom sustavu (V,VII,IX,X)
(PSA)	Posebna somatska aferentna: vid, sluh, ravnoteža (II,VIII)