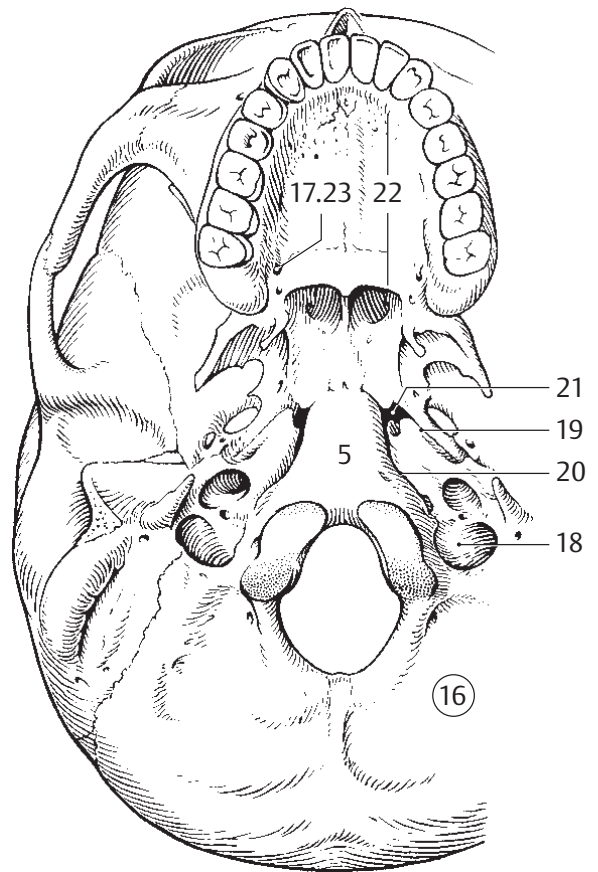
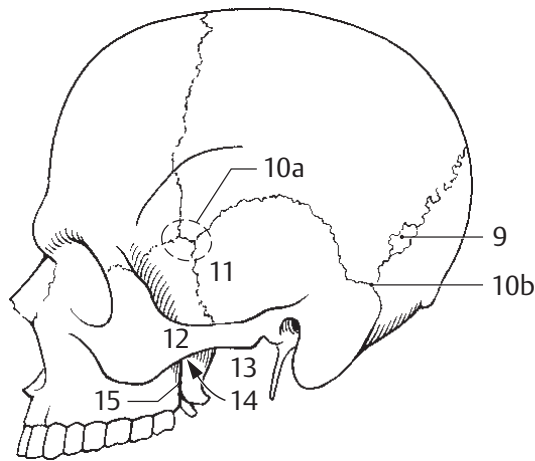


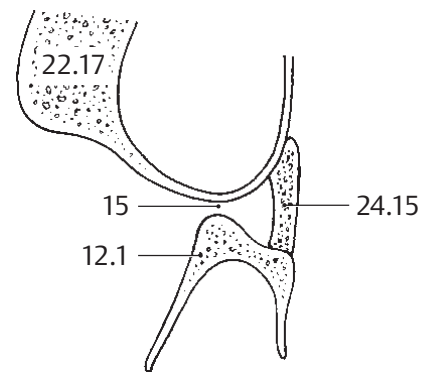
A Internal base of cranium.
Superior aspect of skull base.



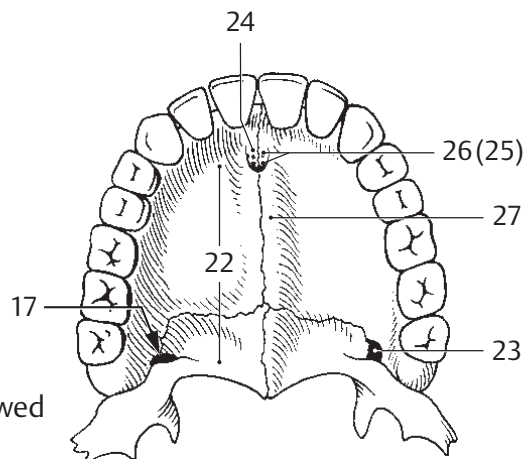
B Skull base
viewed from below



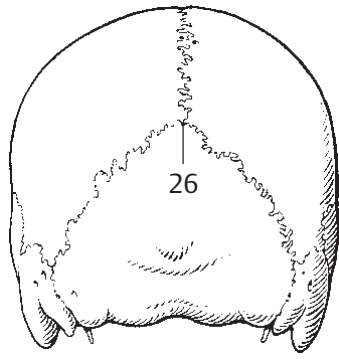
C Skull from left



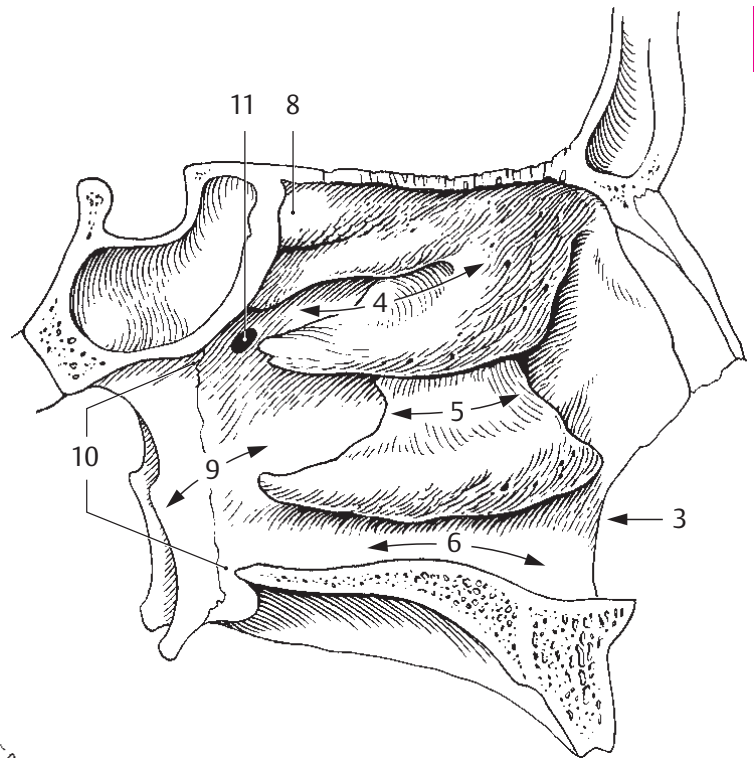
D Schematic
horizontal section
through the
pterygopalatine fossa



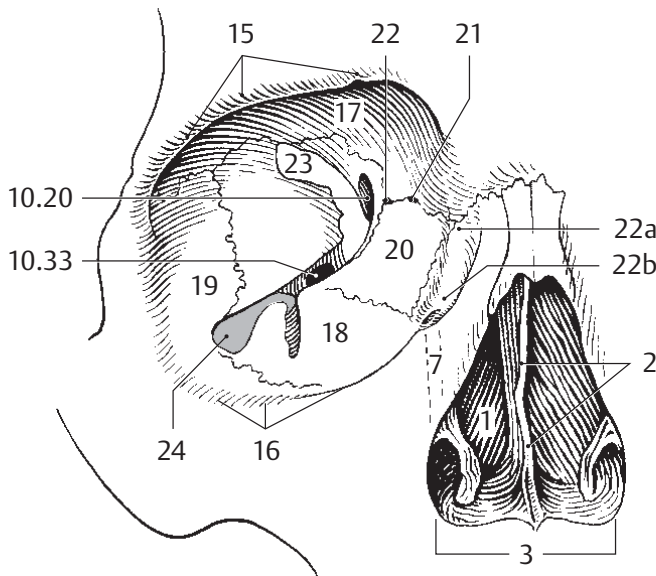
E Hard palate viewed
from below



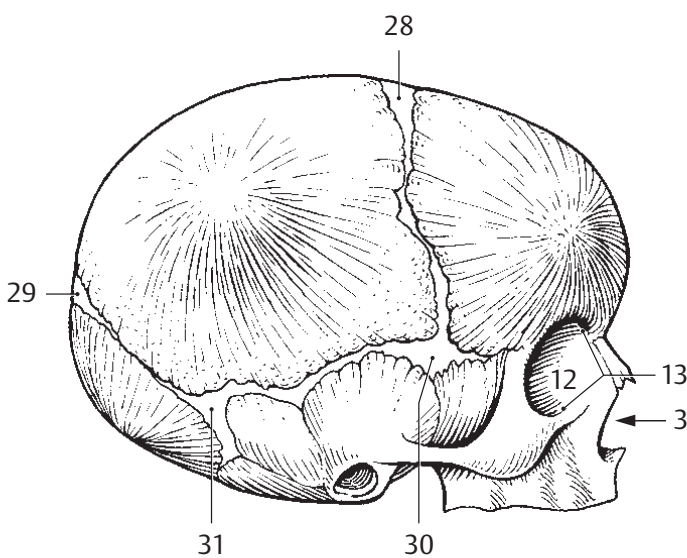
A Lateral wall of nasal cavity with frontal and sphenoidal sinuses



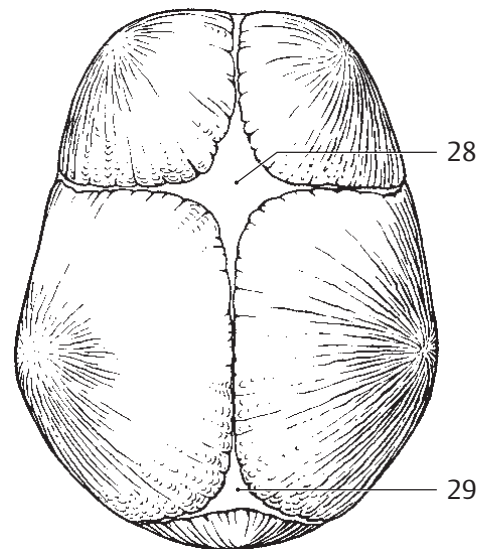
B Normal outline of skull viewed from behind (norma occipitalis)



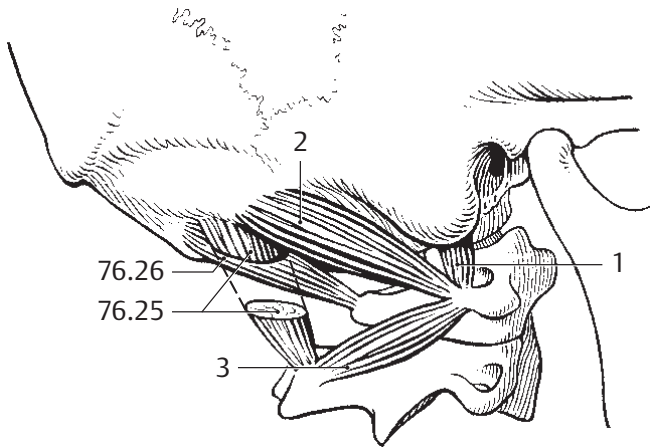
C Right bony orbital cavity



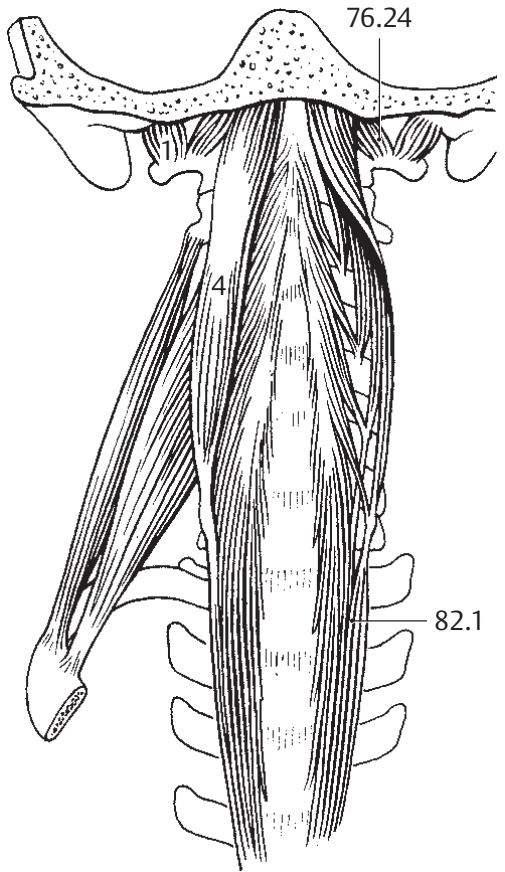
D Skull of newborn, dextrolateral view



E Skull of newborn, superior view

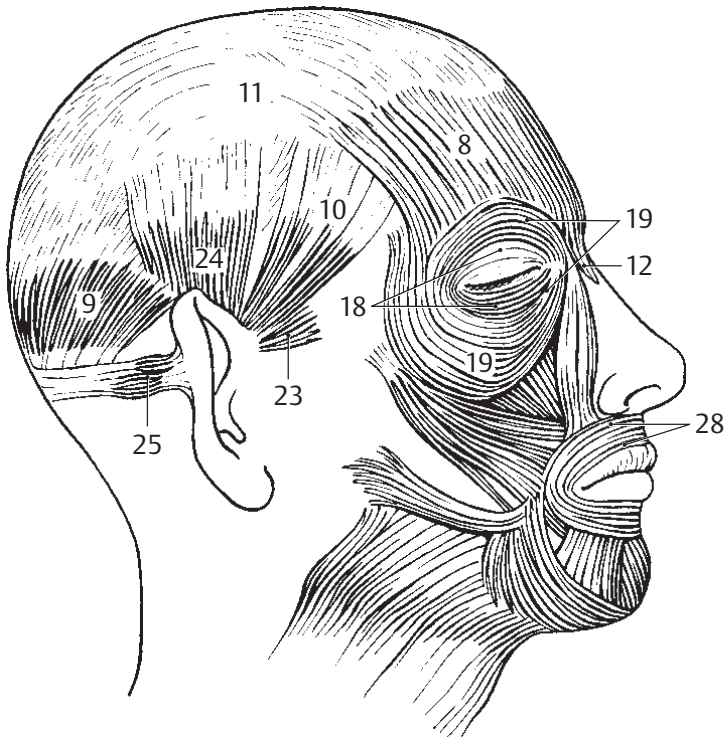


A Deep suboccipital muscles, lateral view

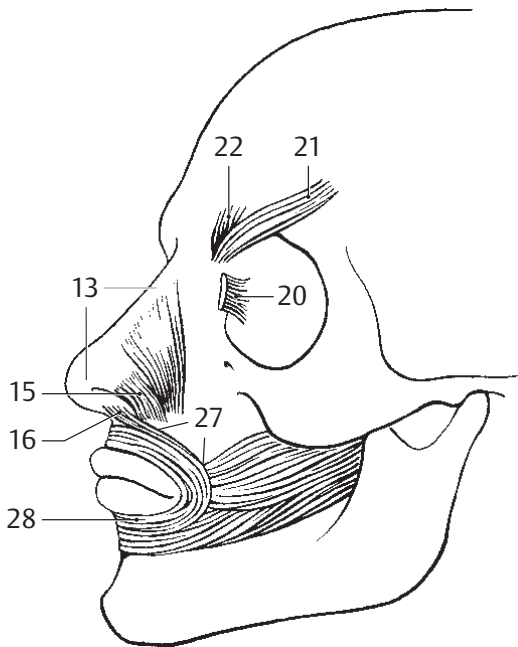


3

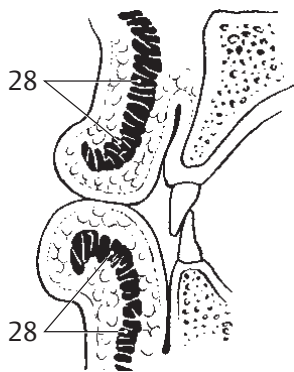
B Neck, anterior view



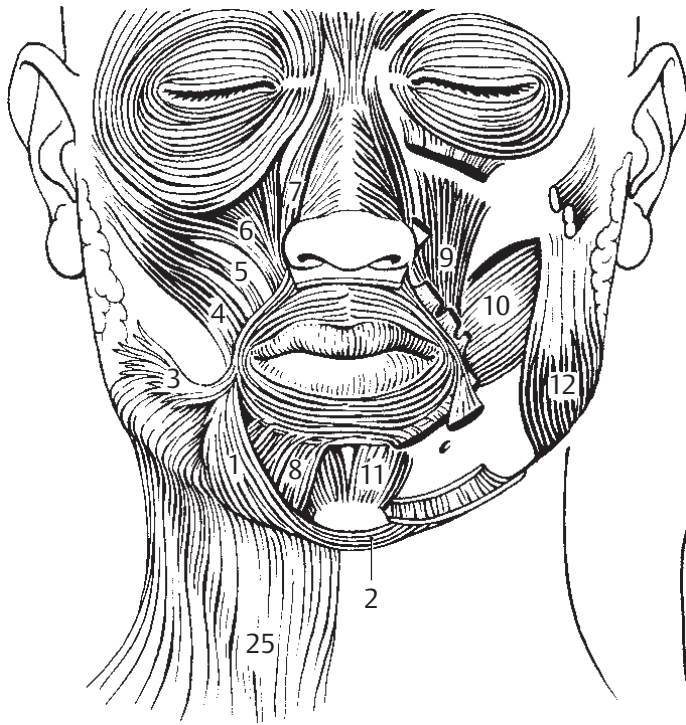
C Superficial muscles of head



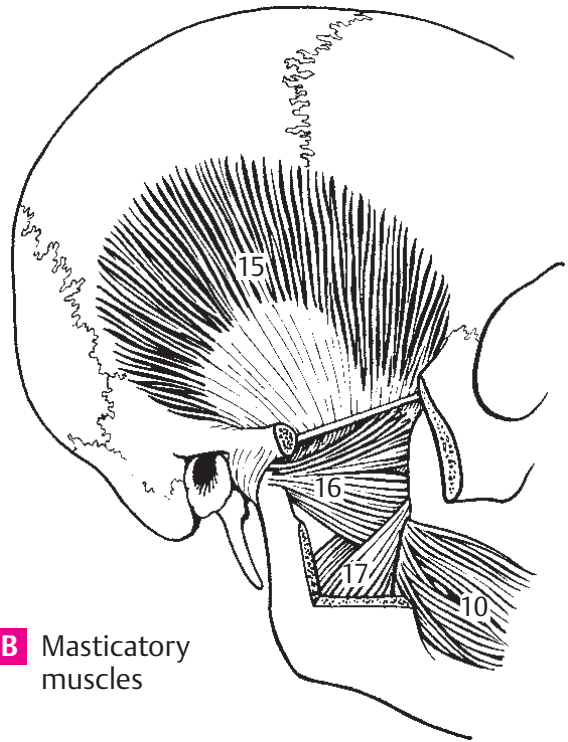
D Deep mimetic muscles



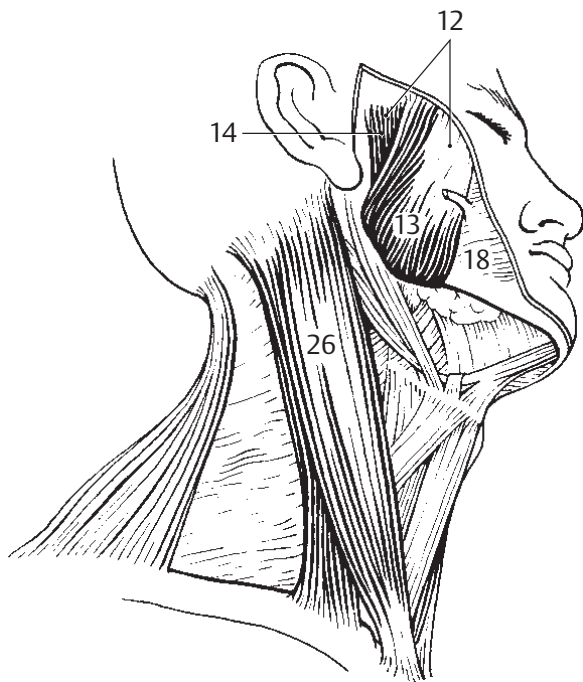
E Sagittal section through the lips



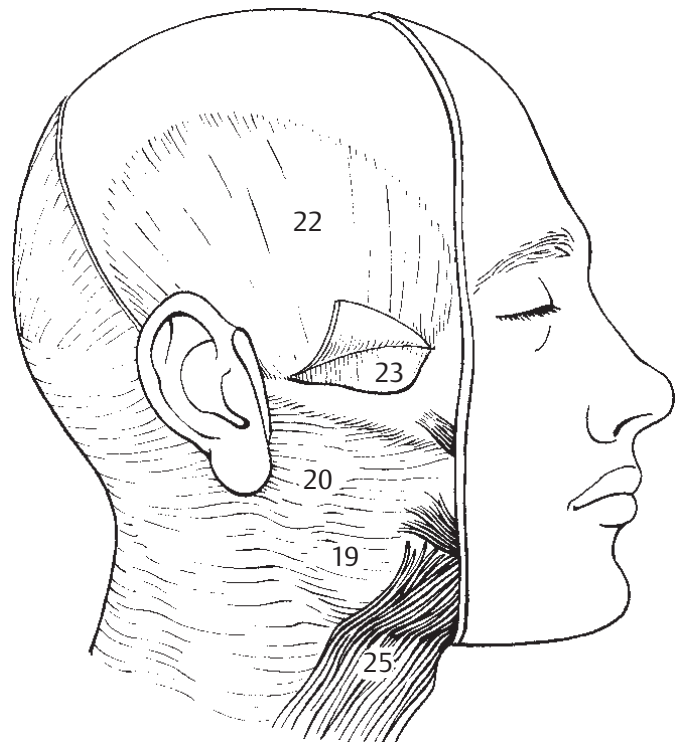
A Facial muscles, anterior view



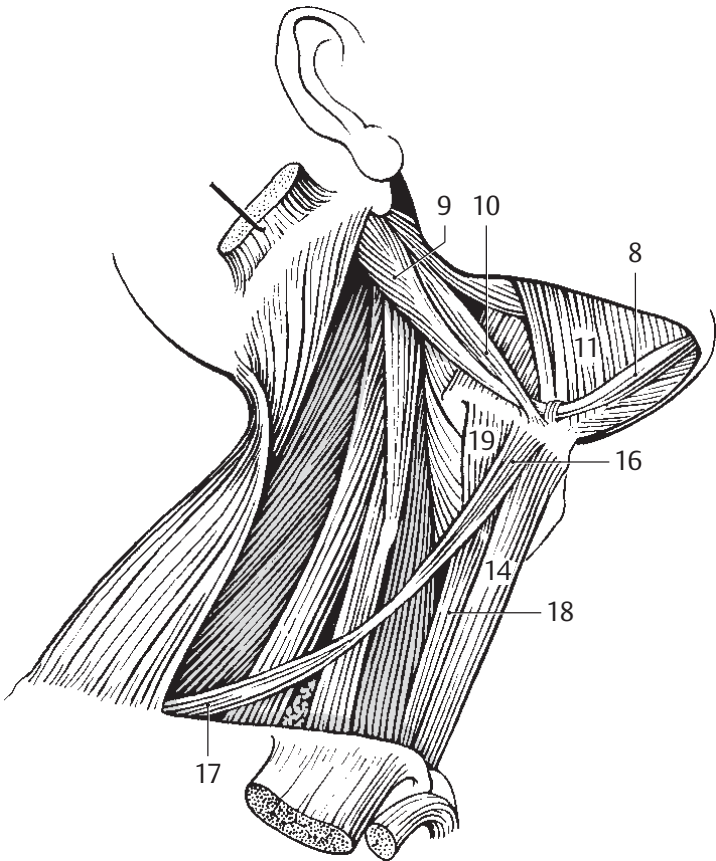
B Masticatory muscles



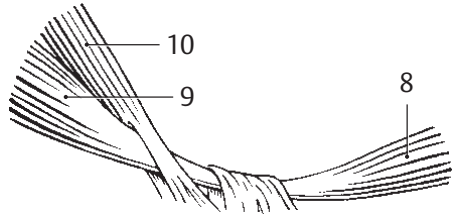
C Muscles of head and neck, right inferior view



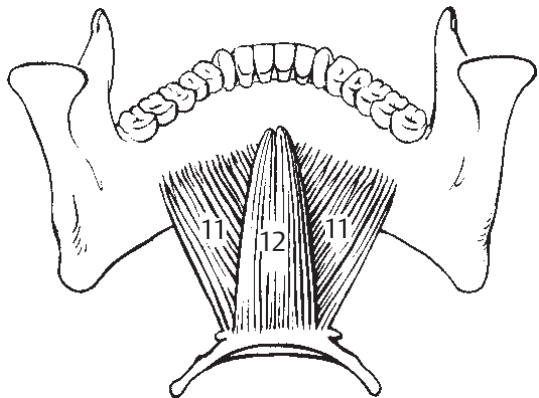
D Fasciae of the head



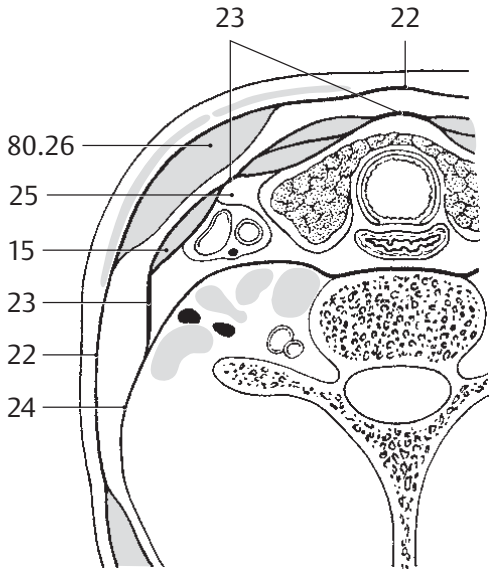
A Muscles of hyoid bone



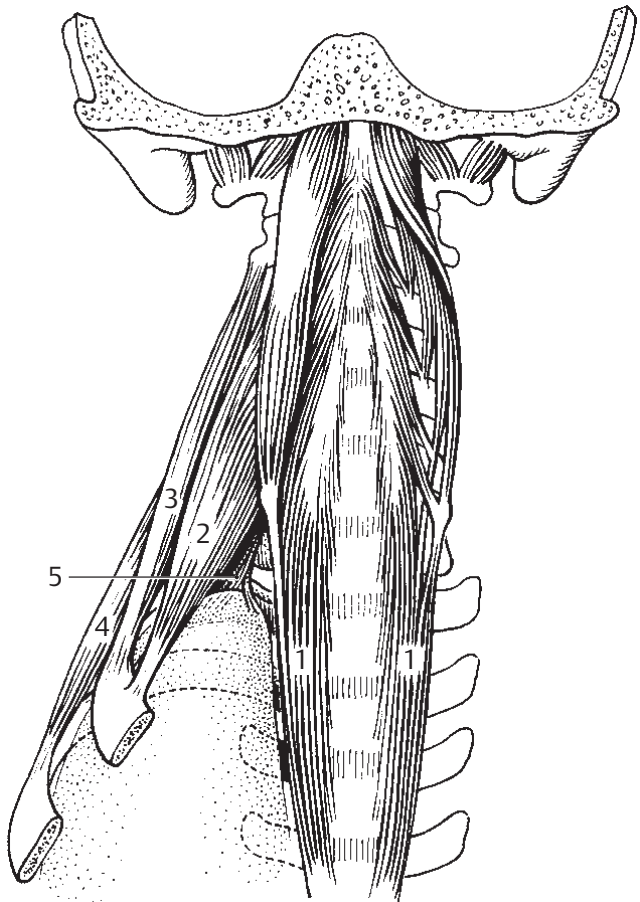
E Segment of A



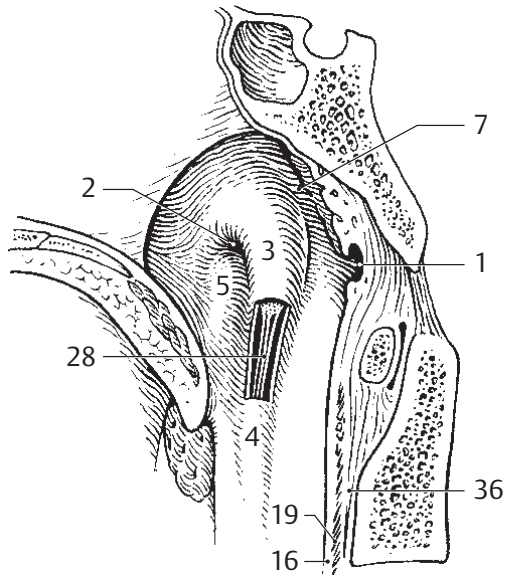
B Muscles of floor of mouth from above and behind



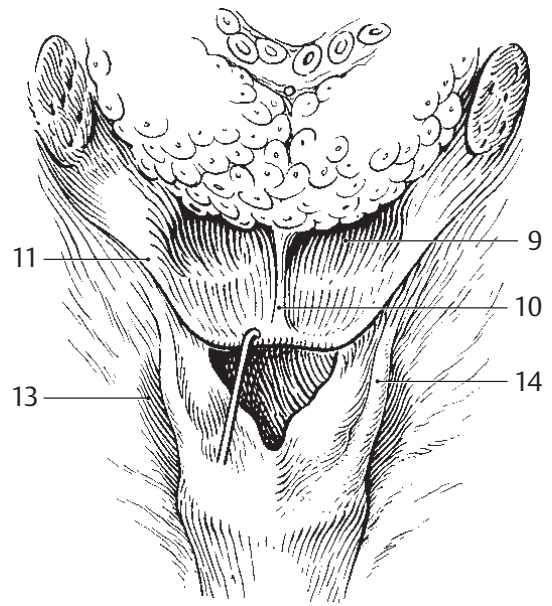
C Fasciae of the neck



D Deep neck muscles, anterior view

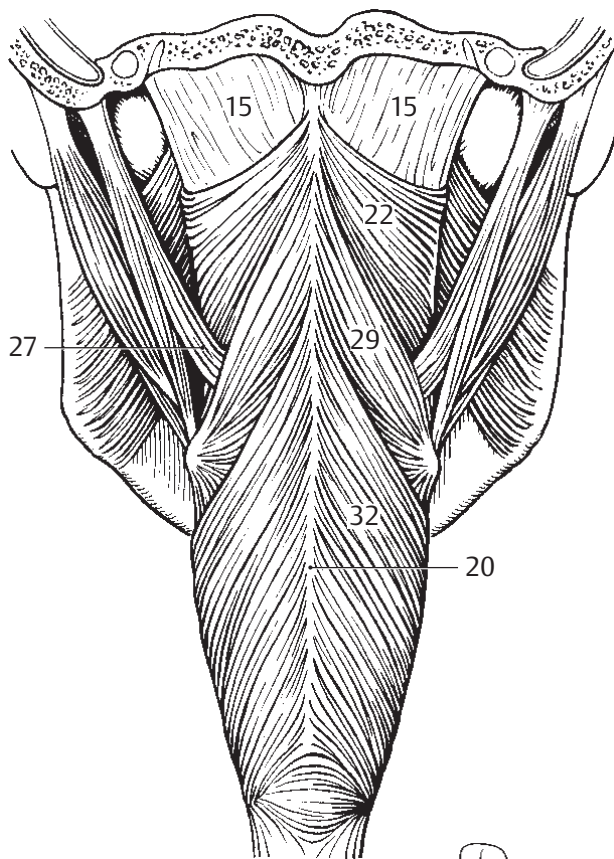


A Pharyngeal opening of auditory tube

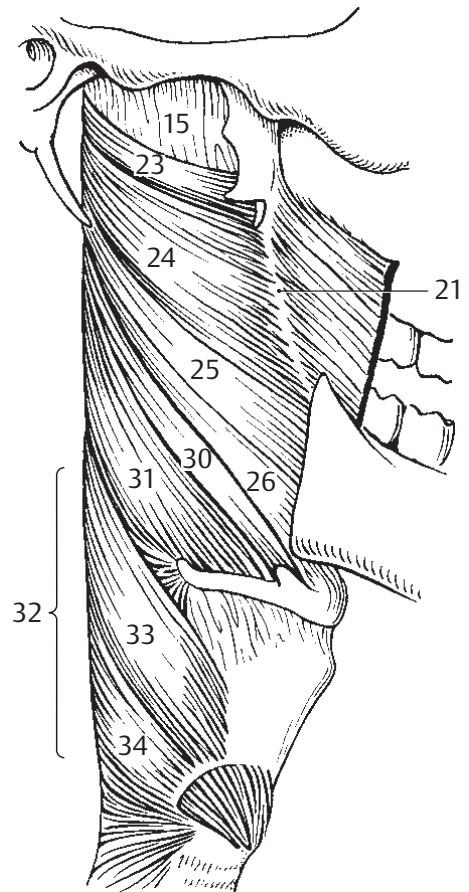


B Base of tongue and laryngeal opening

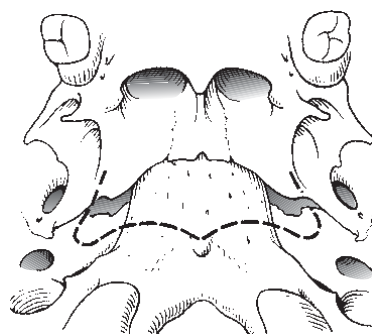
5



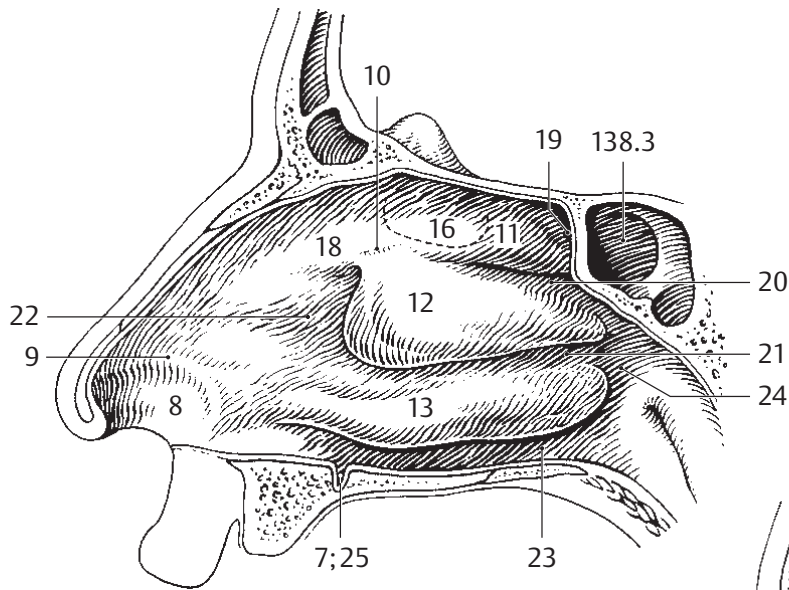
C Pharyngeal muscles from behind



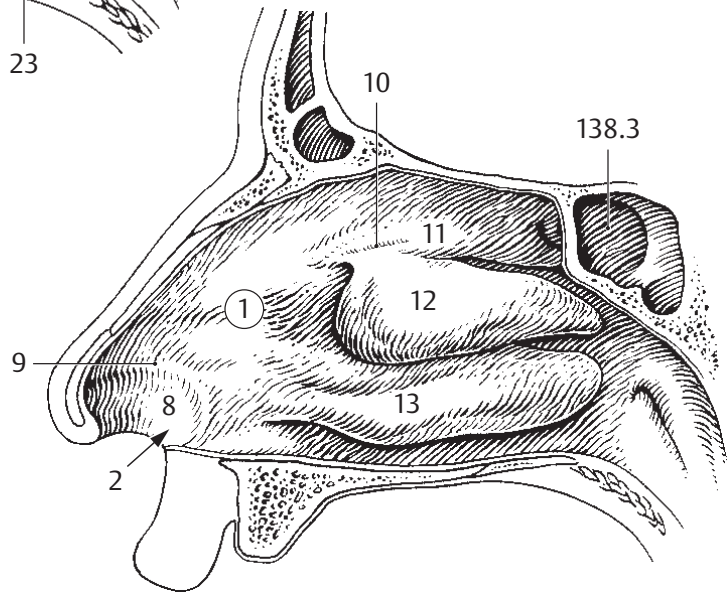
D Pharyngeal muscles from right



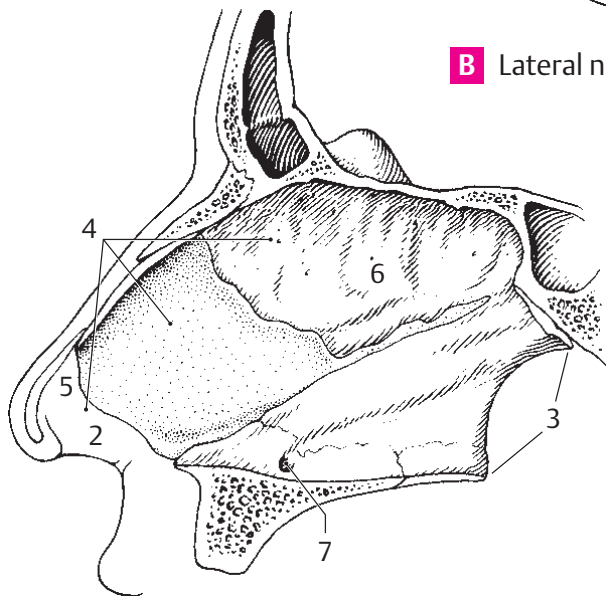
E Attachment of the pharyngobasilar fascia



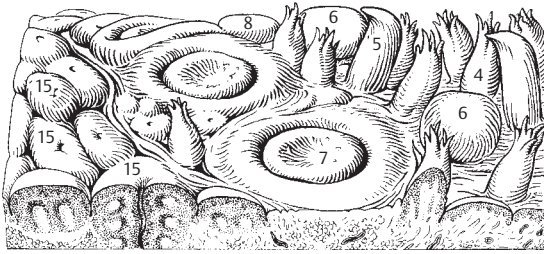
A Lateral nasal wall with sphenoidal sinus



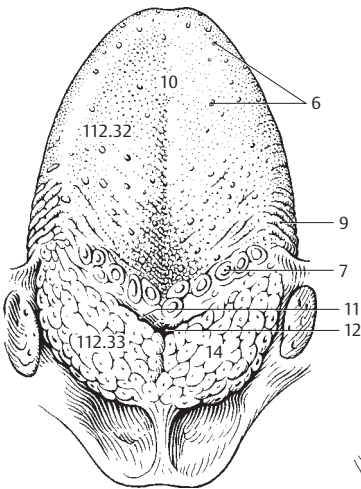
B Lateral nasal wall



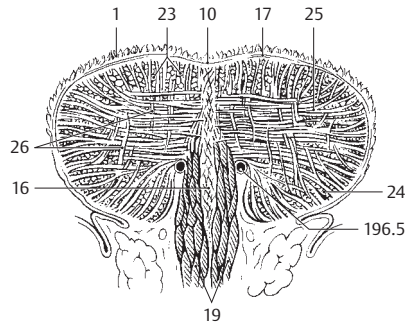
C Nasal septum



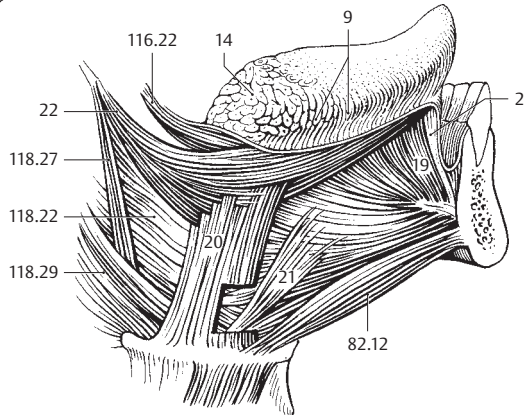
A Surface of tongue, enlarged



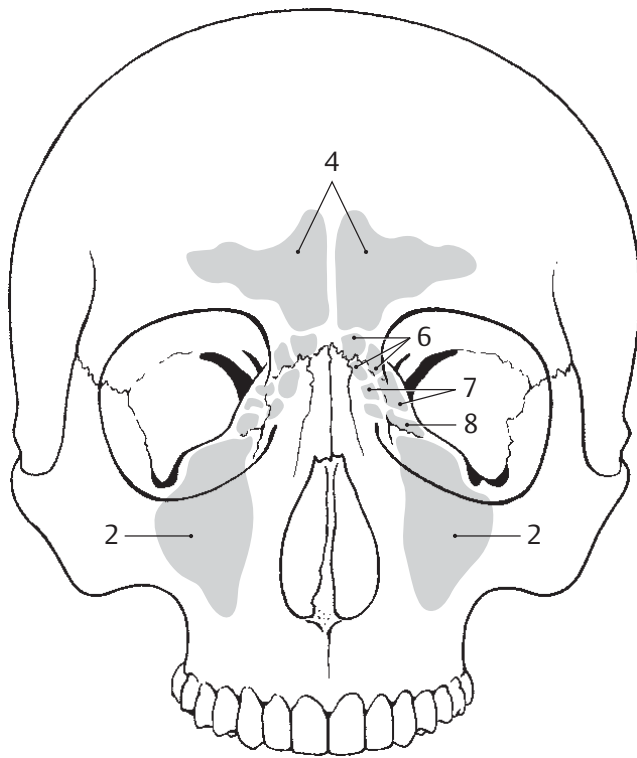
B Dorsum of tongue, overview



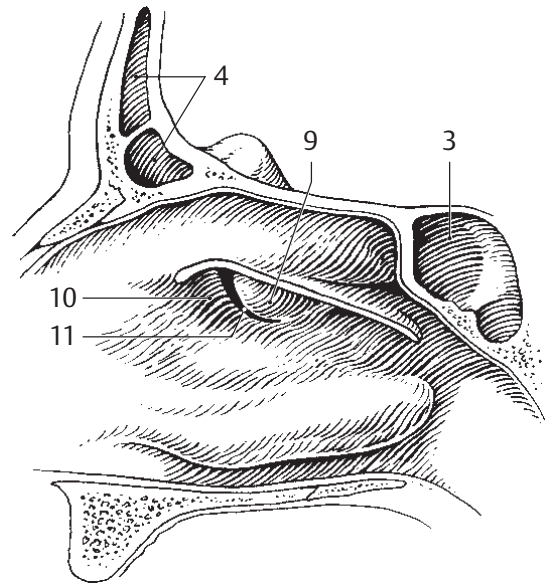
C Cross-section of tongue



D Tongue muscles

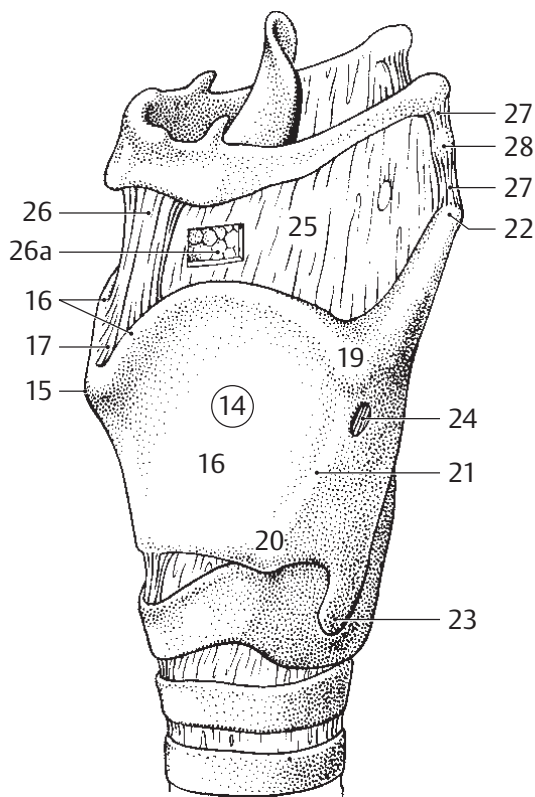


A Paranasal sinuses without sphenoidal sinus

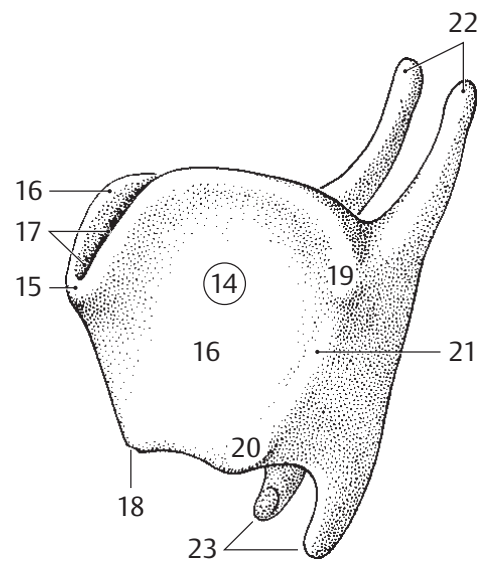


6

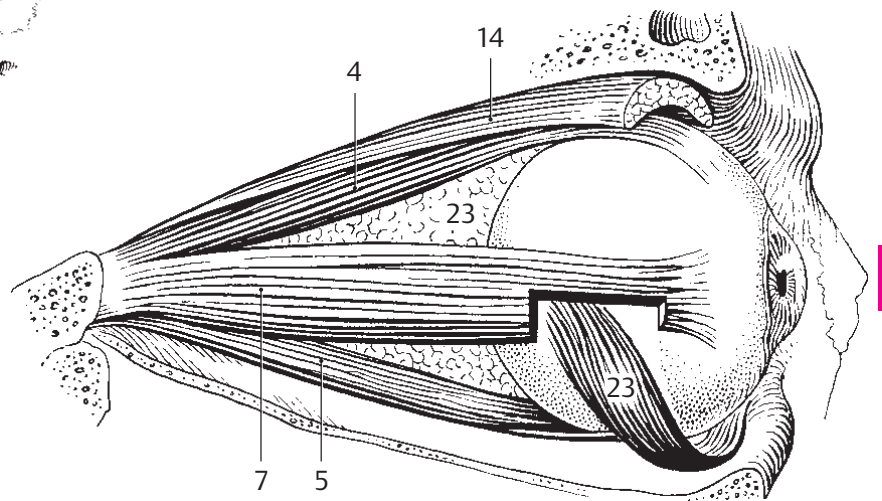
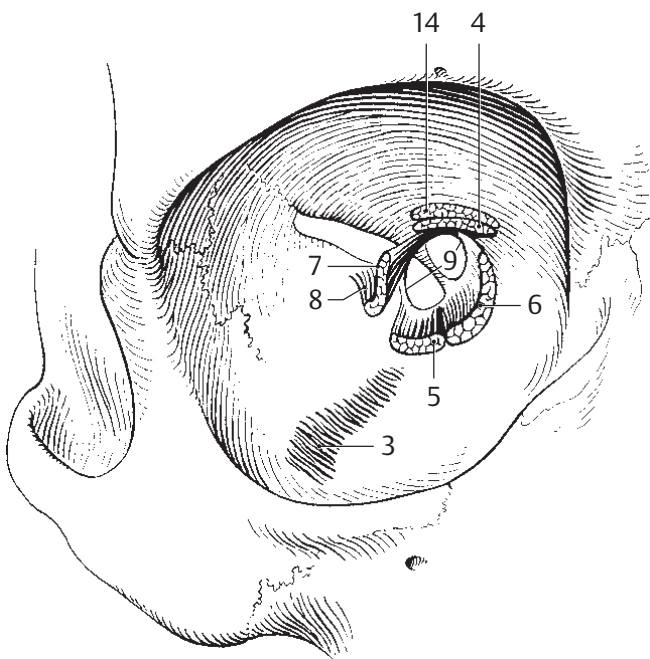
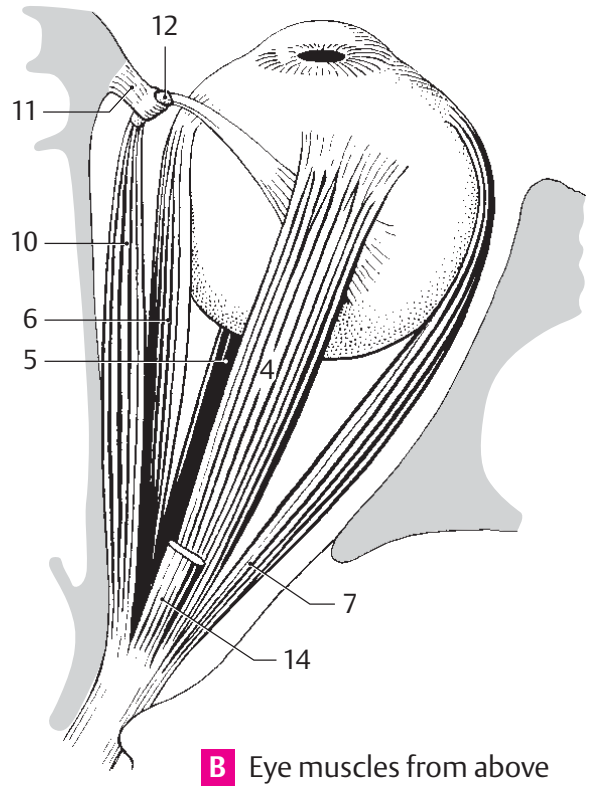
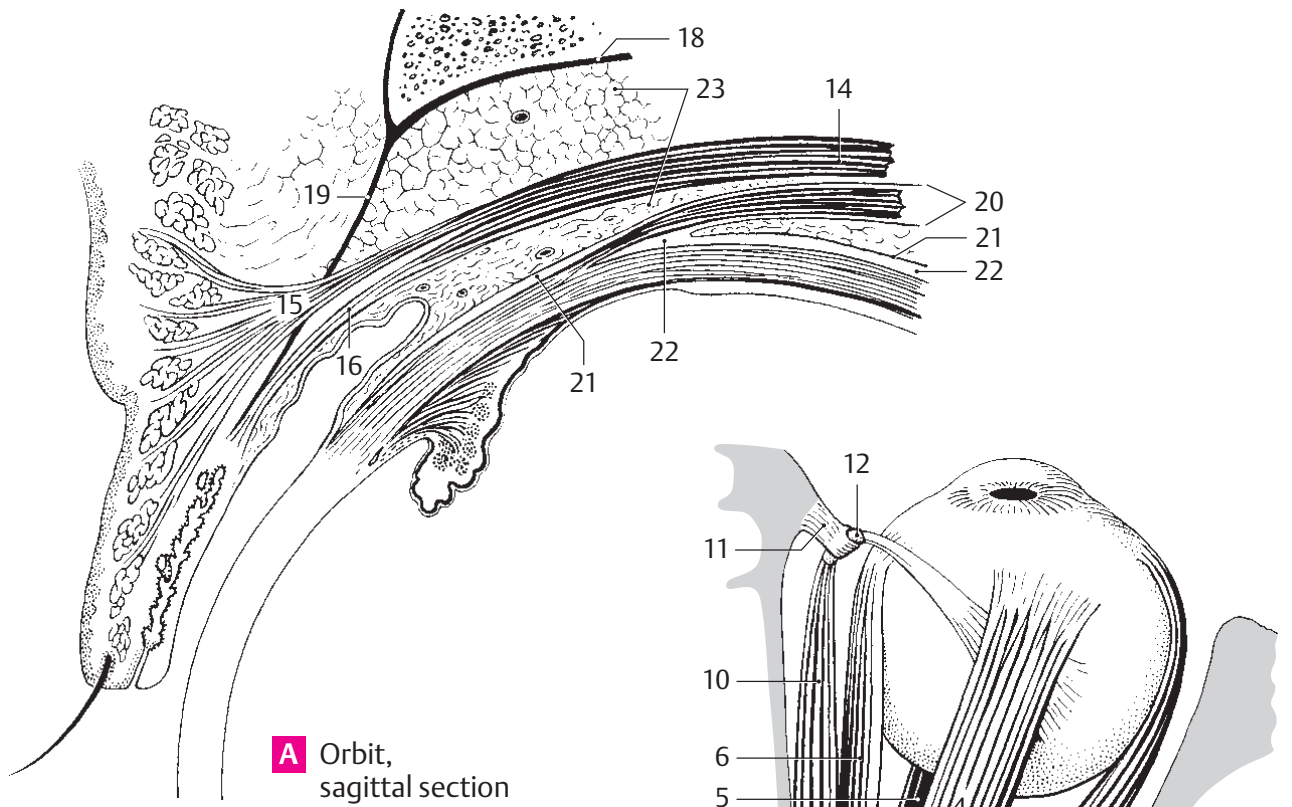
B Lateral nasal wall without middle nasal concha

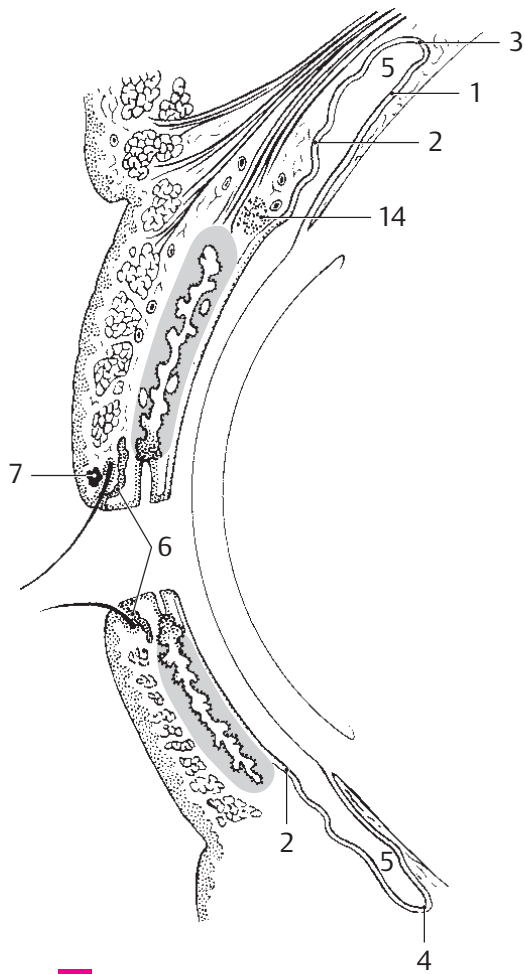


C Larynx

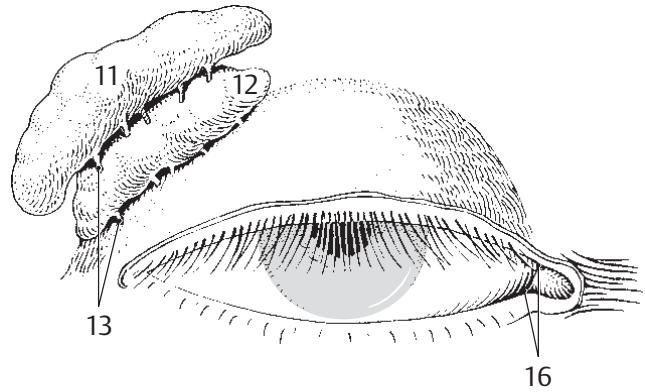


D Thyroid cartilage

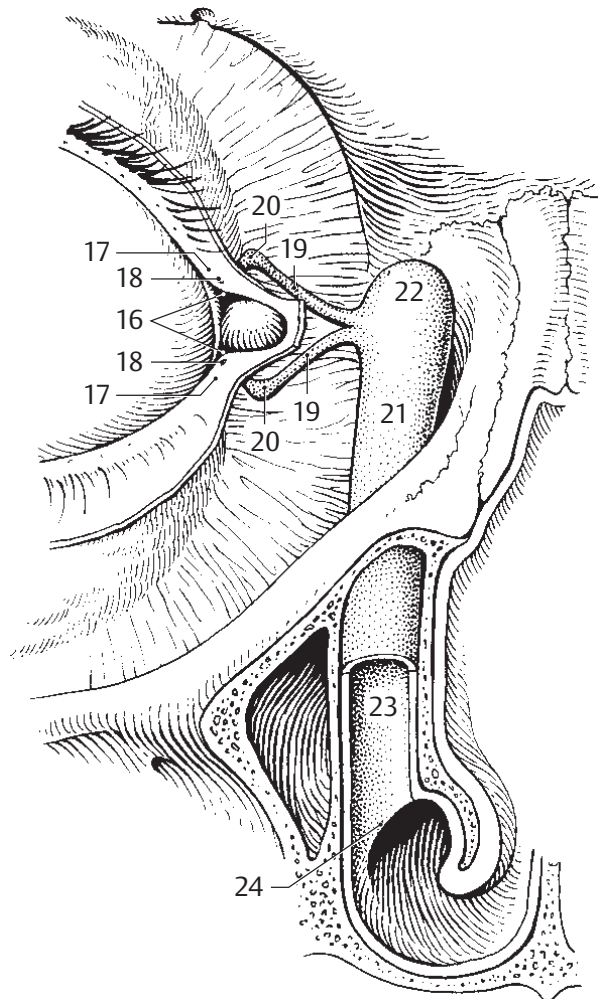




A Eyelids, sagittal section



B Lacrimal gland



C Lacrimal system