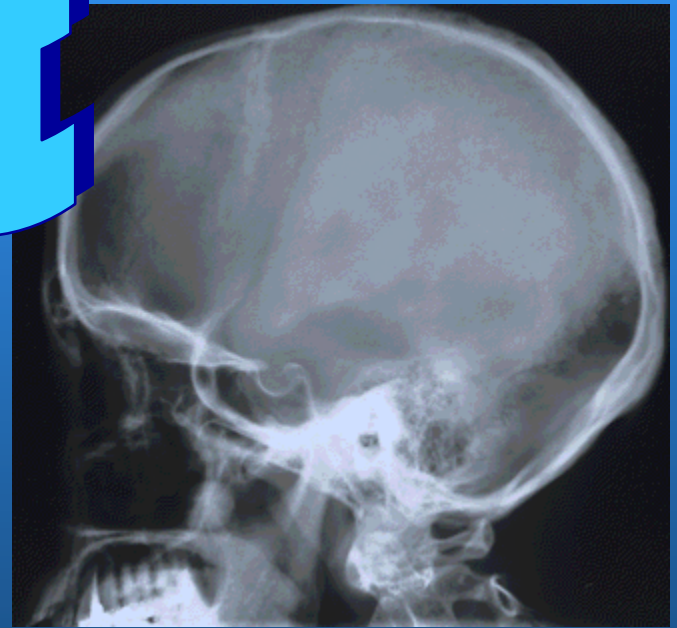
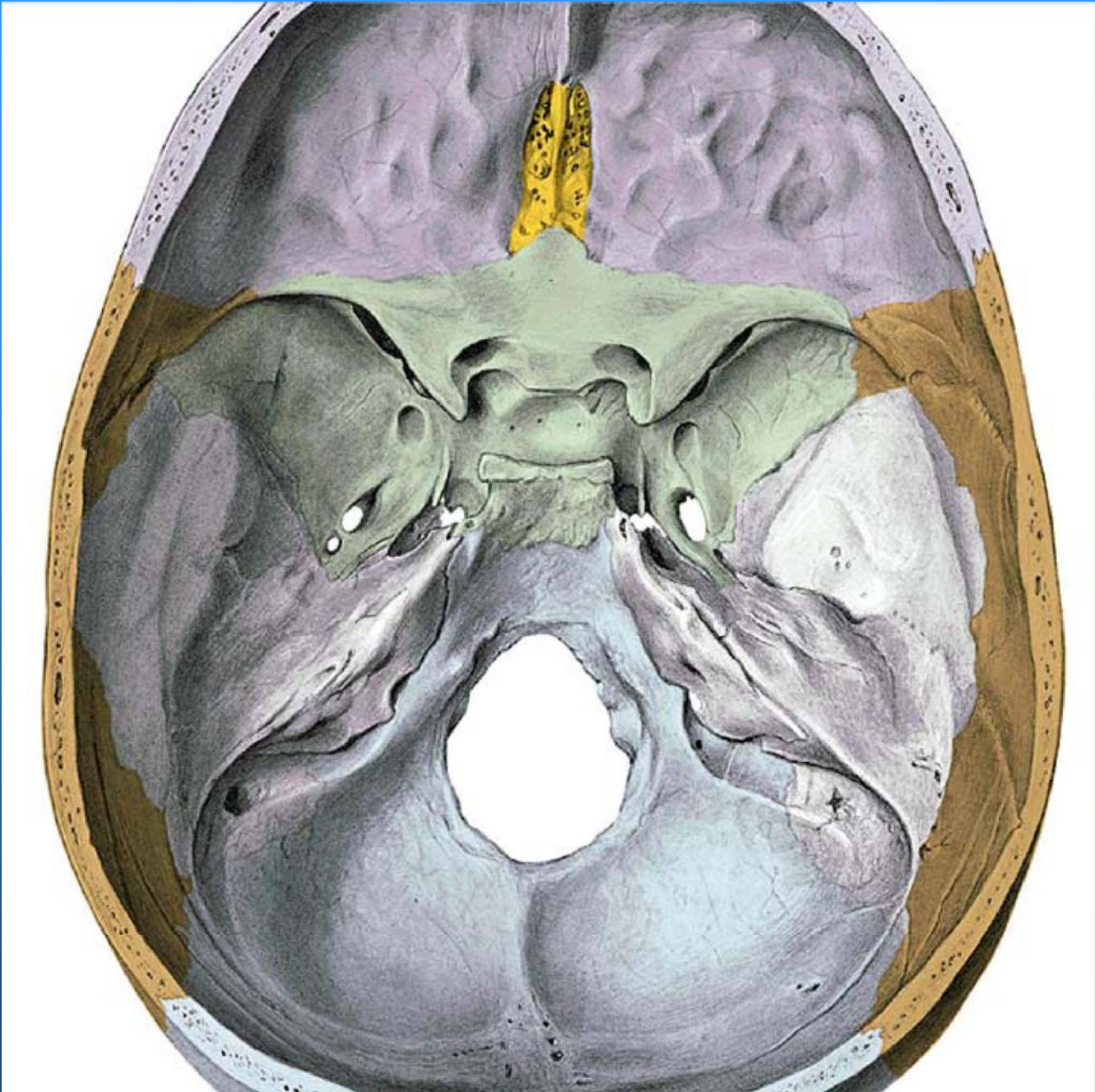
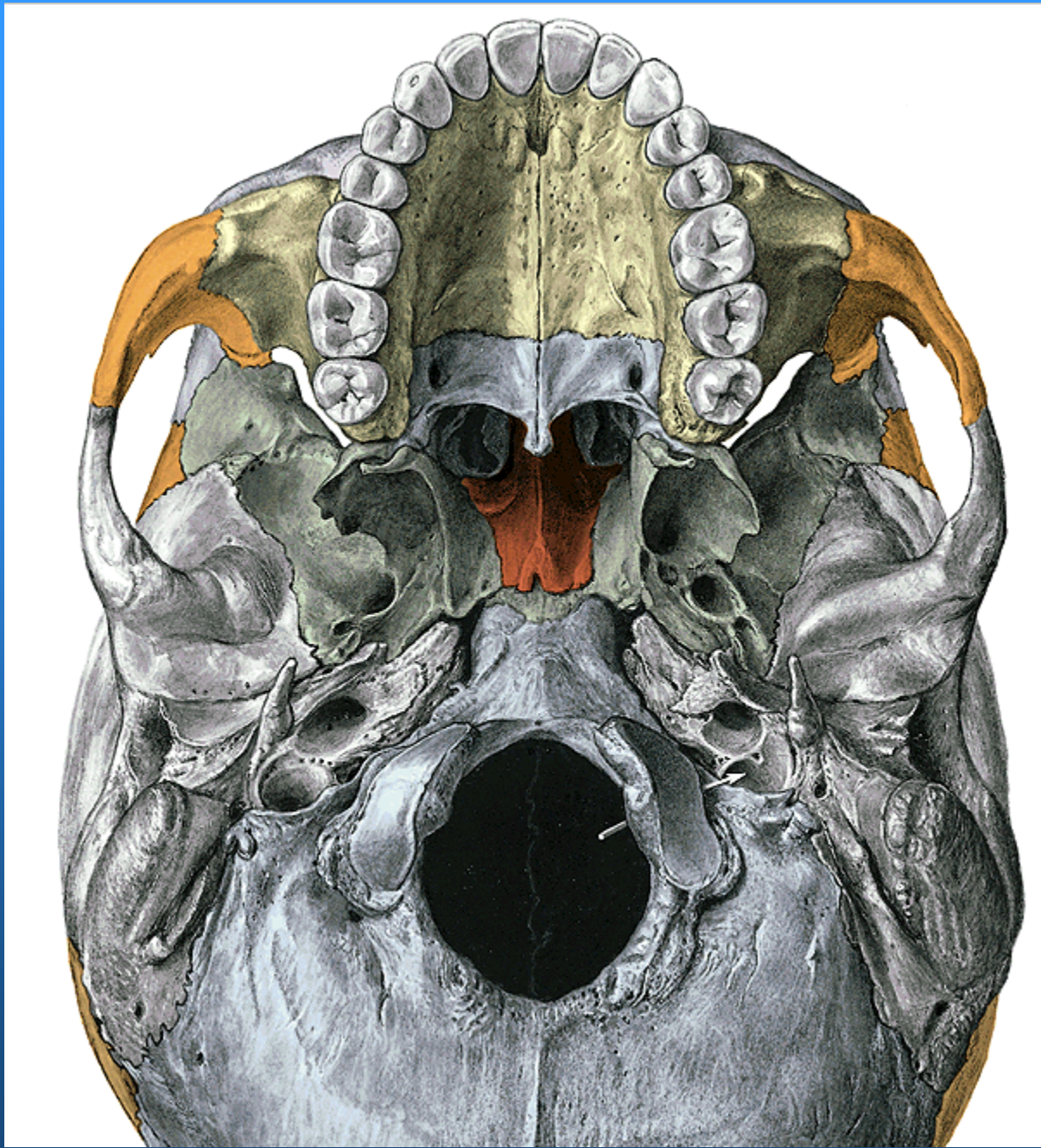


KOSTI GLAVE









- KOSTI NEUROKRANIJA**
- OS OCCIPITALE: pars basilaris, partes laterales, squama
 - OS FRONTALE: squama, partes orbitales, pars nasalis
 - OS PARIETALE: margo, suturae
 - OS TEMPORALE: pars petrosa, p. squamosa, p. tympanica
 - **OS SPHENOIDALE**: corpus, alae minores, alae maiores, processus pterygoidei
 - **OS ETHMOIDALE**: lamina cribrosa —, l. perpendicularis |, l. orbitalis /†\
 - **OS PALATINUM**: lamina horizontalis, l. perpendicularis

KOSTI VISCEROKRANIJA: MAXILA, MANDIBULA, os lacrimaleos zygomaticum, os nasale, vomer, concha nasalis inferior, os hyoideum

- **POKAZATI, GRANICE, OSNOVNI DIJELOVI- pokazati**
- **OTVORI**

REGIJE → KOŠTANA OMEĐENJA: fossa temporalis, f. infratemporalis, f. pterygopalatina, orbita, cavum nasi

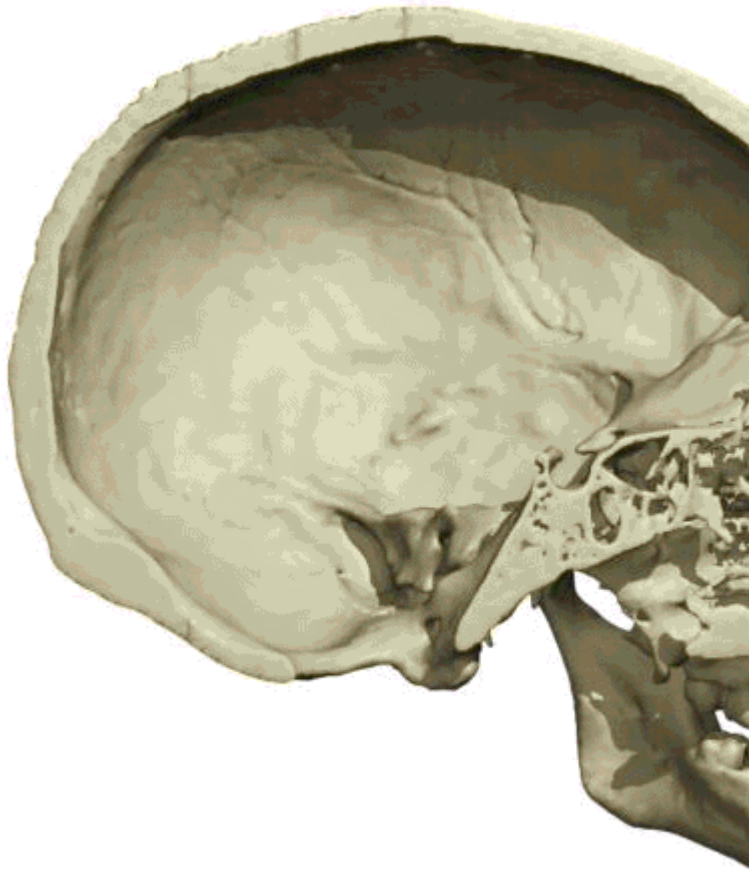
OPĆENITO O SREDIŠNJEM I PERIFERNOM ŽIVČANOM SUSTAVU
(Medicinar, str. 5-8⁹-i mala slova)
→ + MORFOLOGIJA TRUNCUSA CEREBRI

Platzer - dio 1 - str. 276-303 (osim 278/9) - bez malih slova

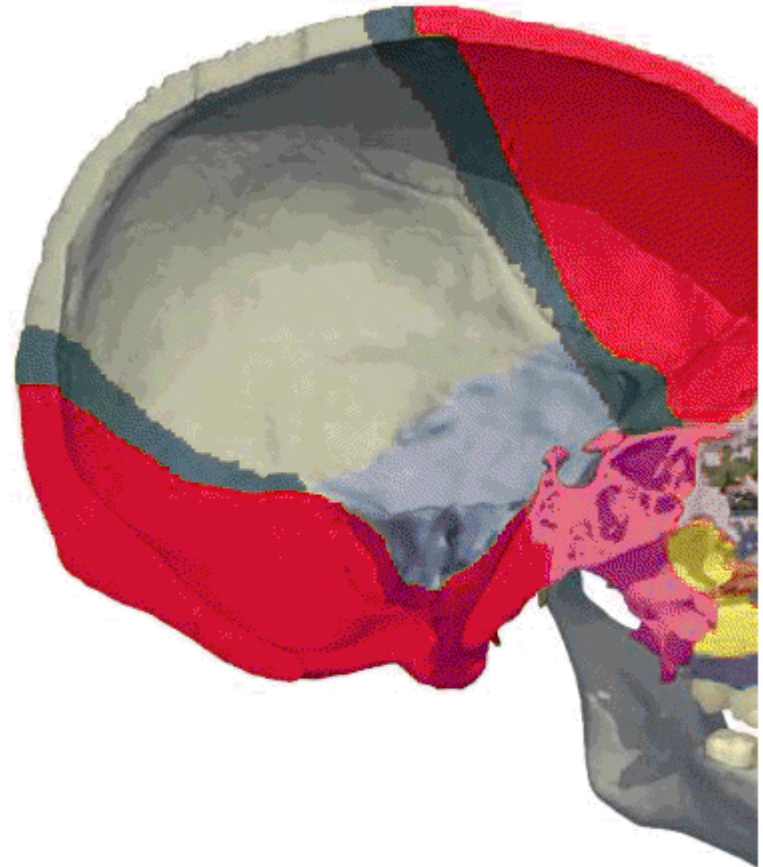
Krmpotić - Kostri - str. 54

Netter - slike 1A-7, 33A,B,34B, 108-109(110-112)

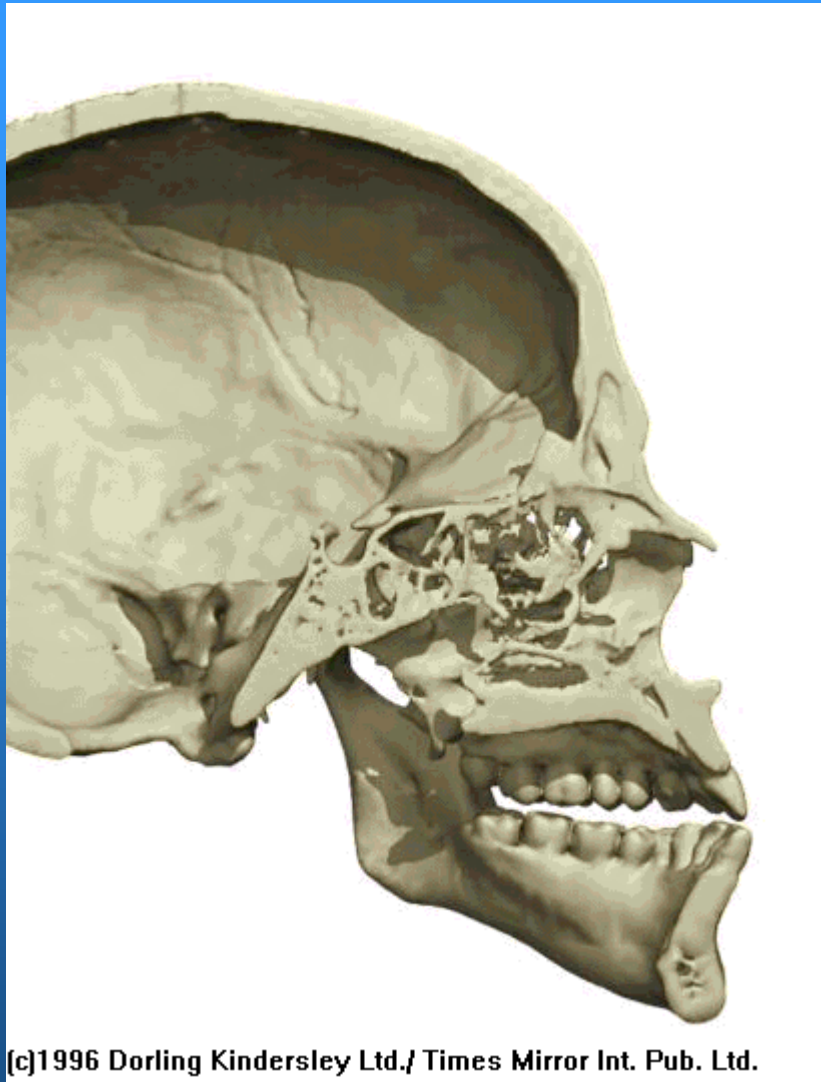
Medicinar, Nastavni tekstovi, 1999, str. 5-11



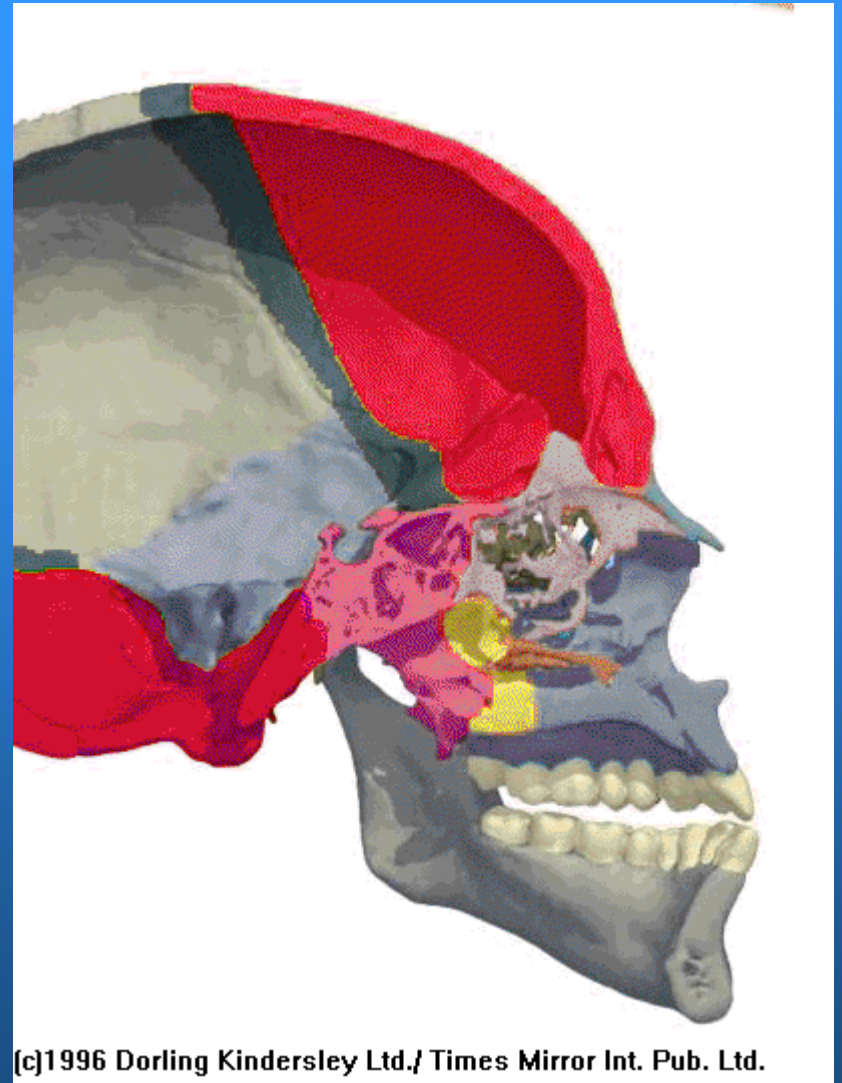
[c]1996 Dorling Kindersley Ltd./ Times Mirror Int. Pub. Ltd.



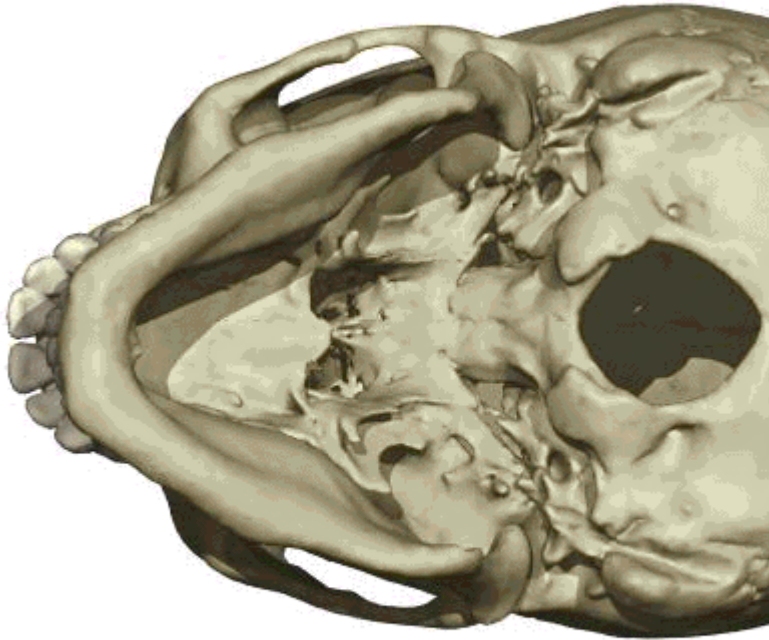
[c]1996 Dorling Kindersley Ltd./ Times Mirror Int. Pub. Ltd.



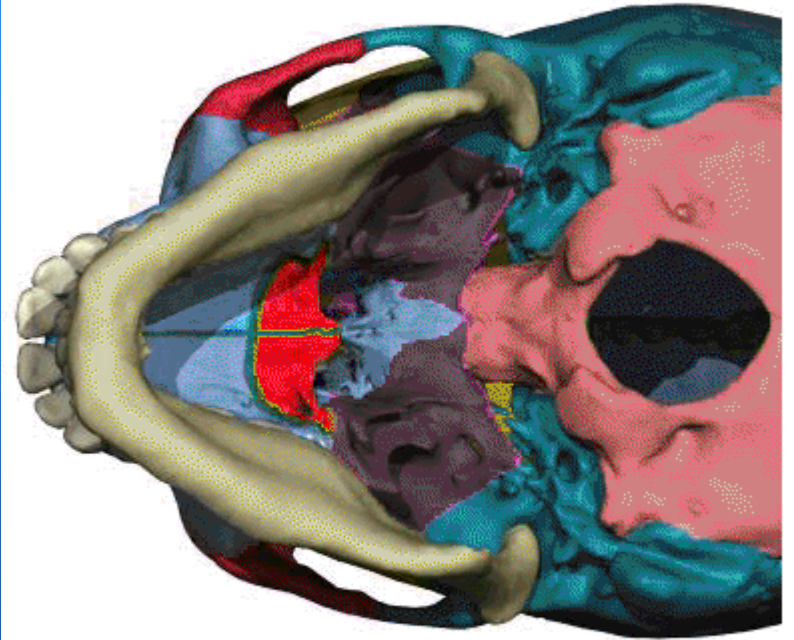
[c]1996 Dorling Kindersley Ltd./ Times Mirror Int. Pub. Ltd.



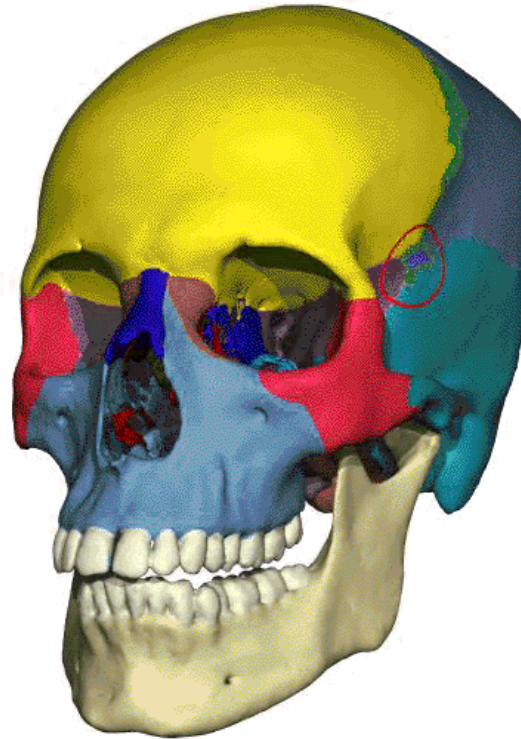
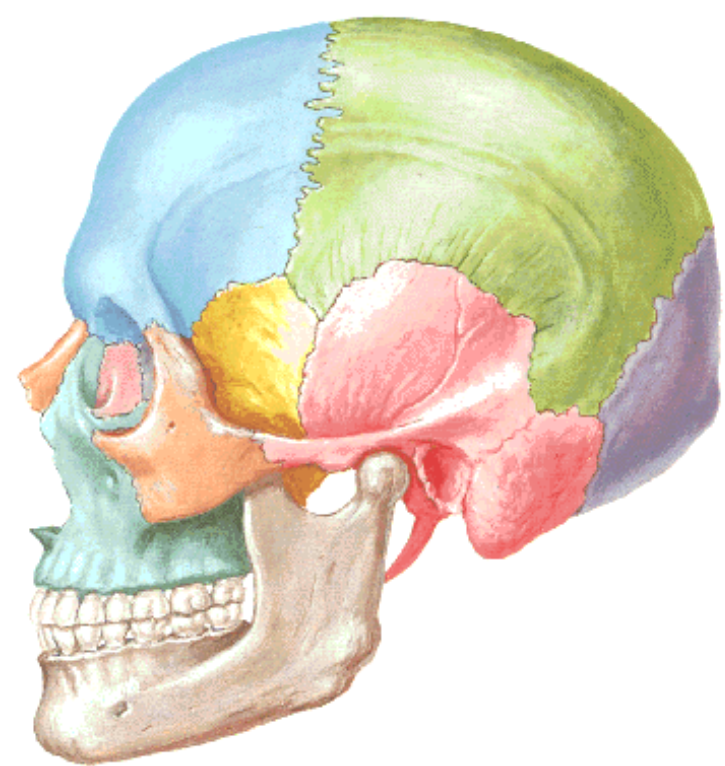
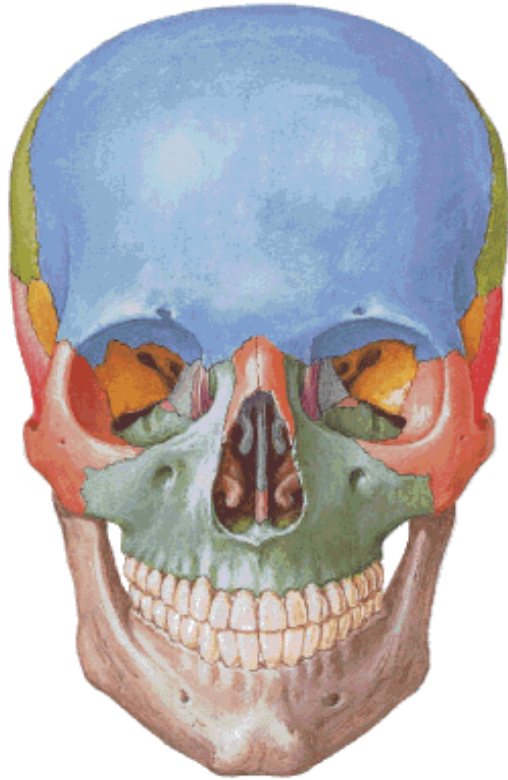
[c]1996 Dorling Kindersley Ltd./ Times Mirror Int. Pub. Ltd.



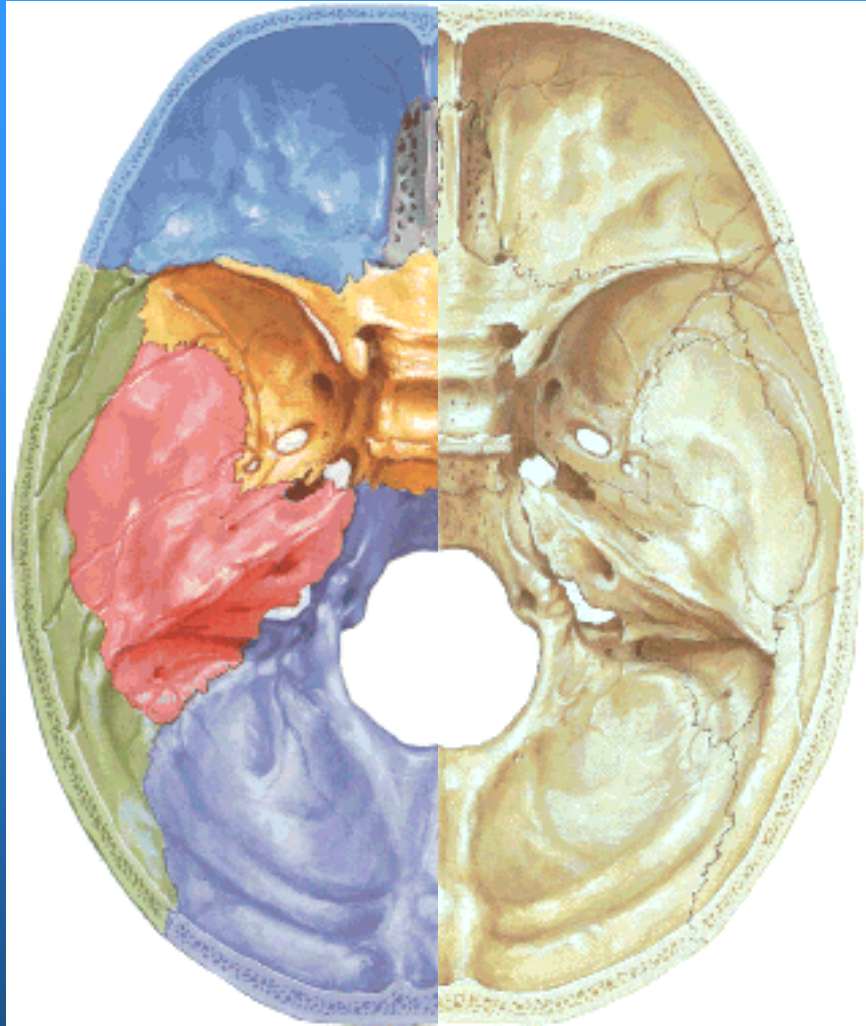
[c]1996 Dorling Kindersley Ltd./ Times Mirror Int. Pub. Ltd.

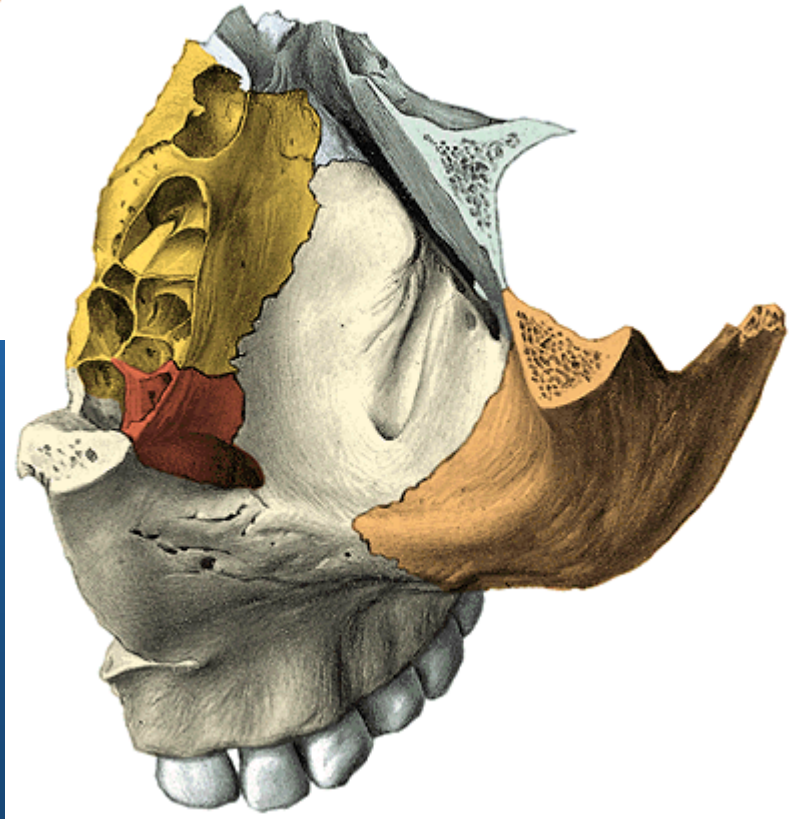
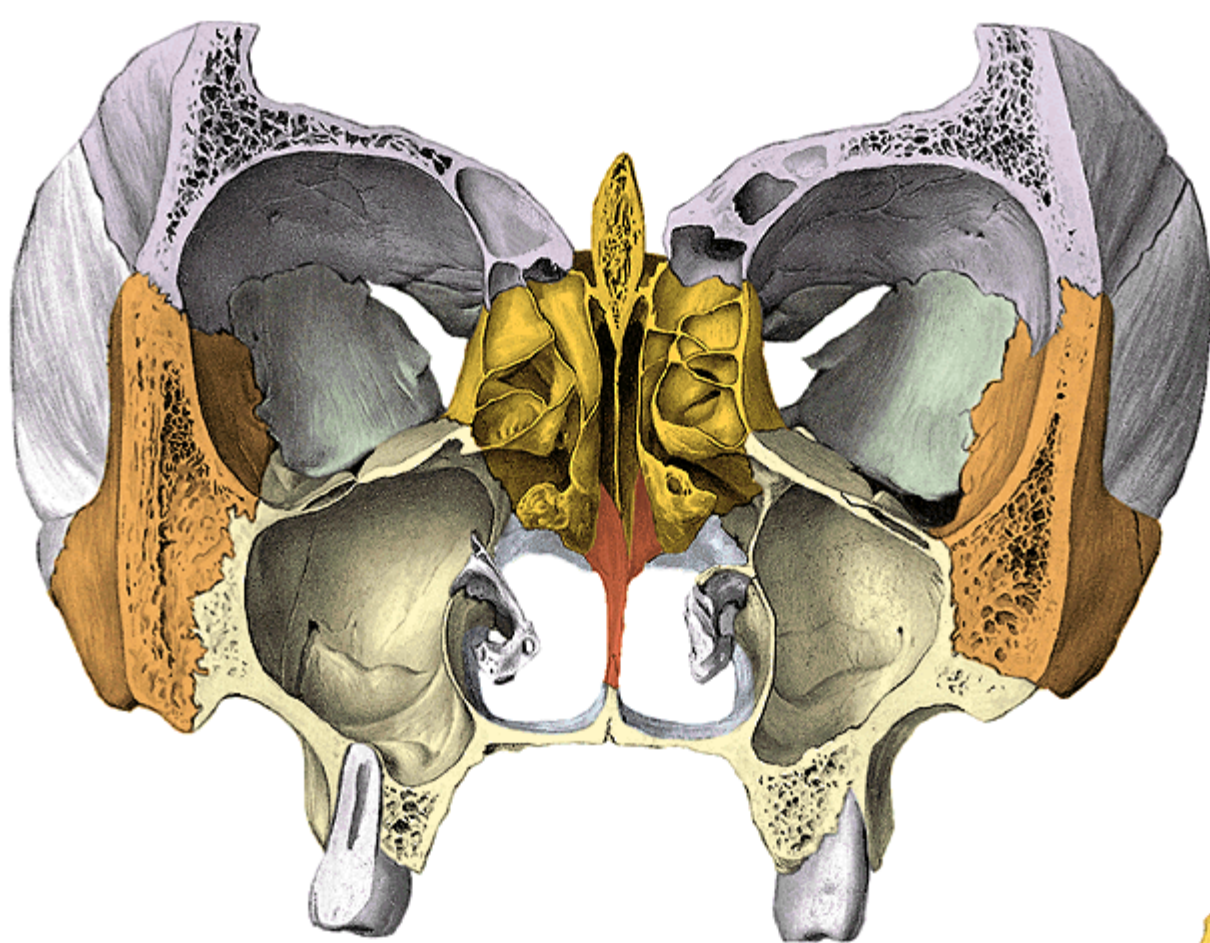


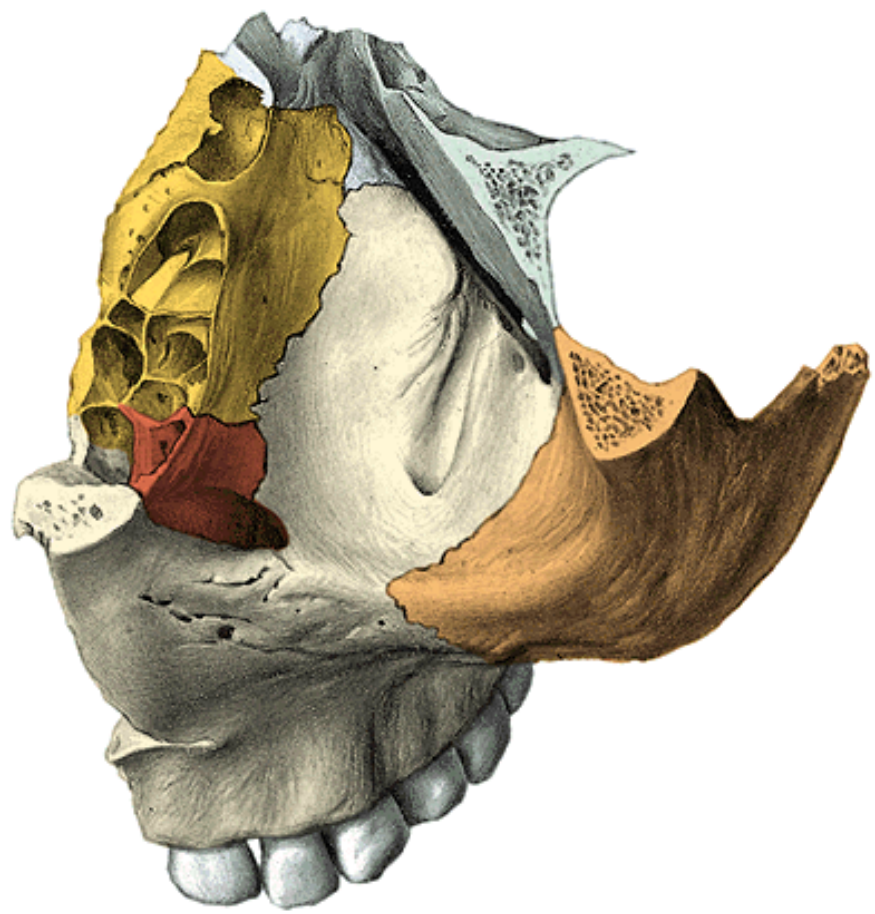
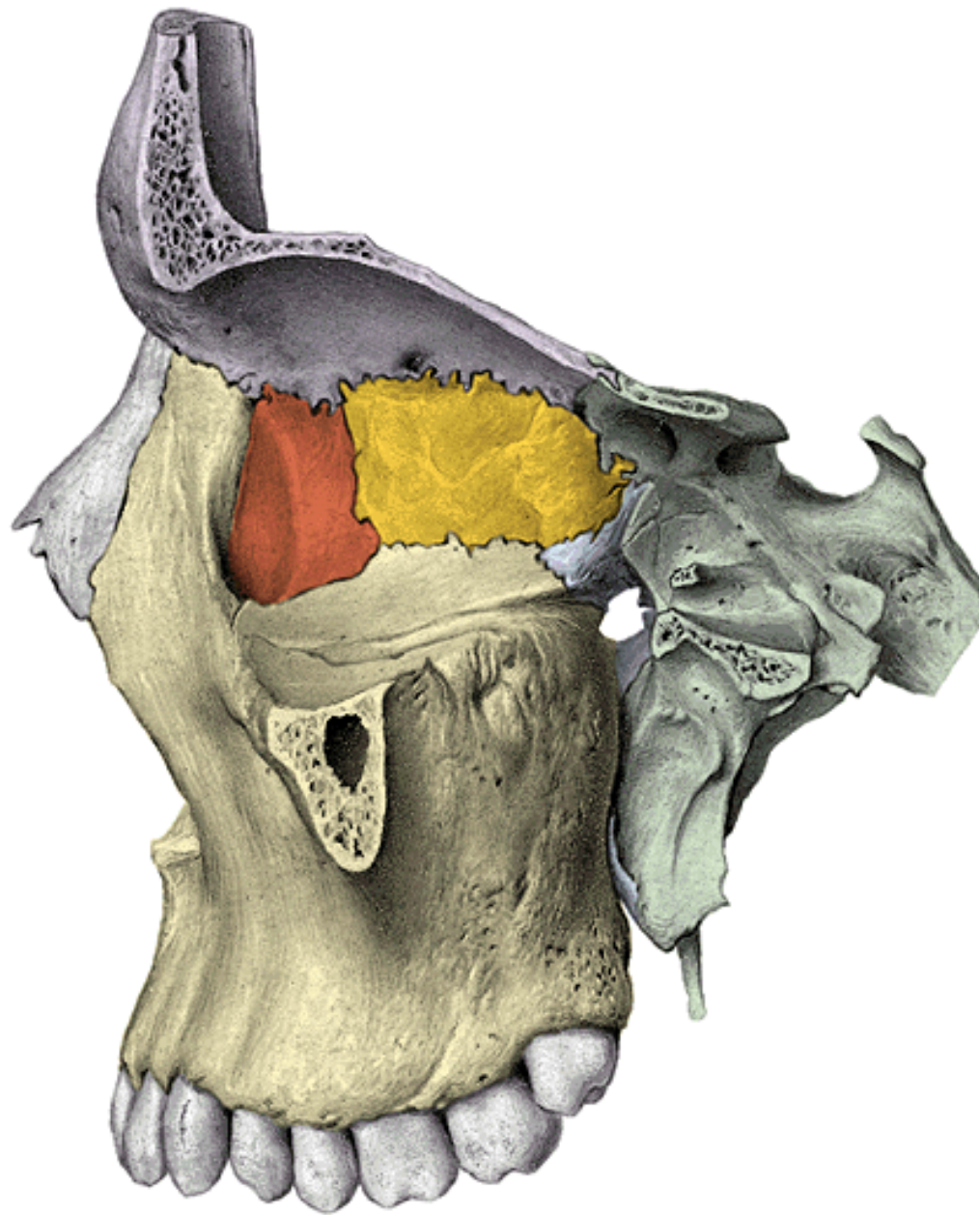
[c]1996 Dorling Kindersley Ltd./ Times Mirror Int. Pub. Ltd.

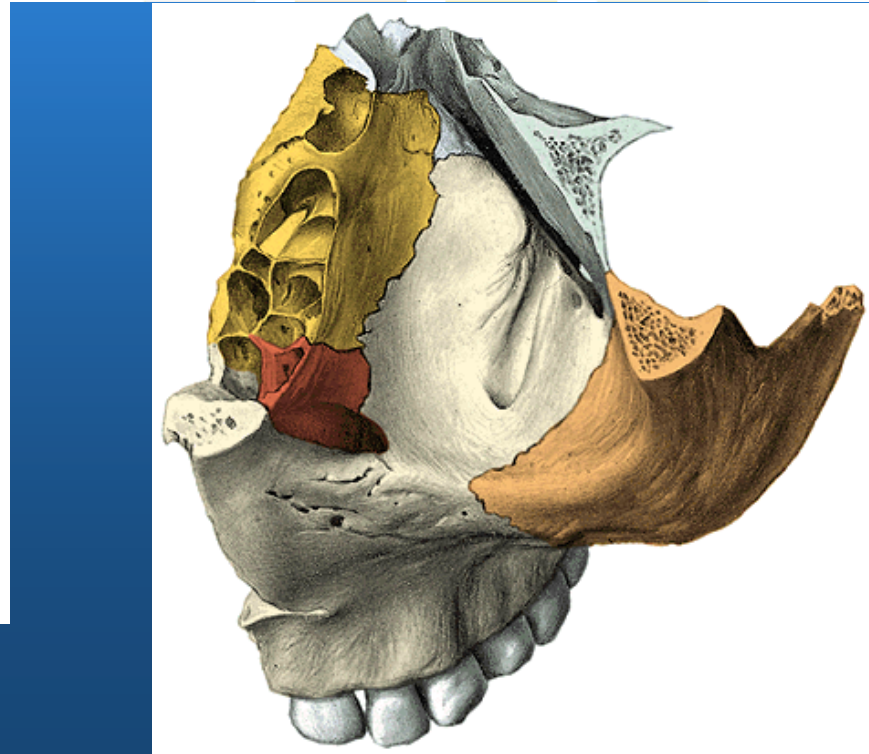
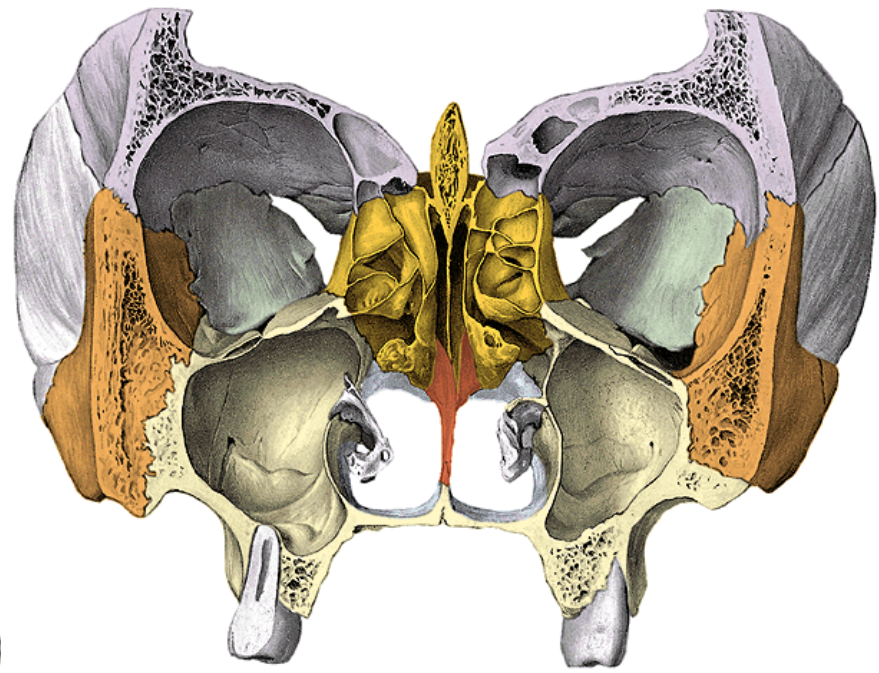
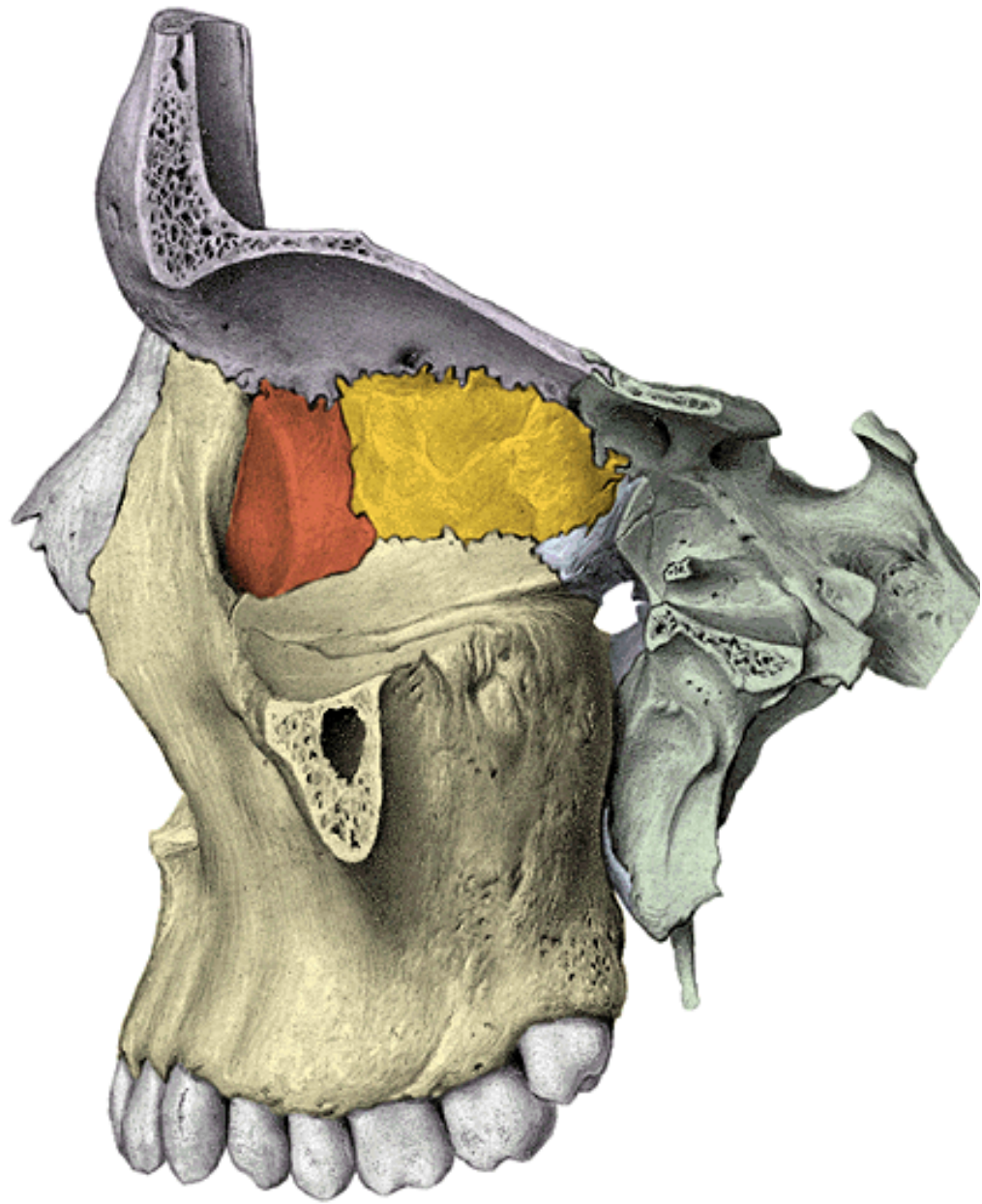


[c]1996 Dorling Kindersley Ltd./Times Mirror Int. Pub. Ltd.

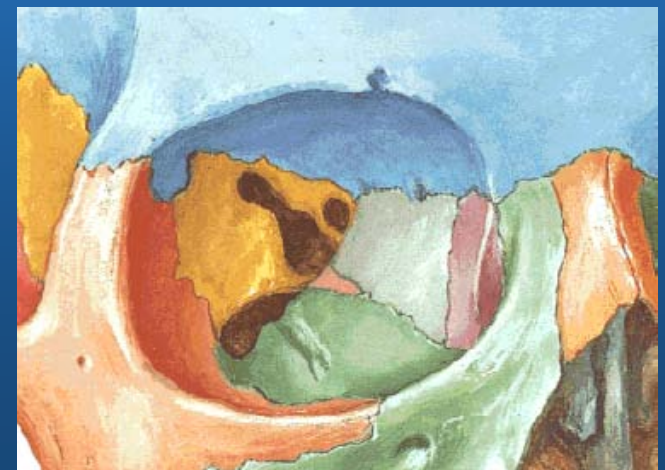
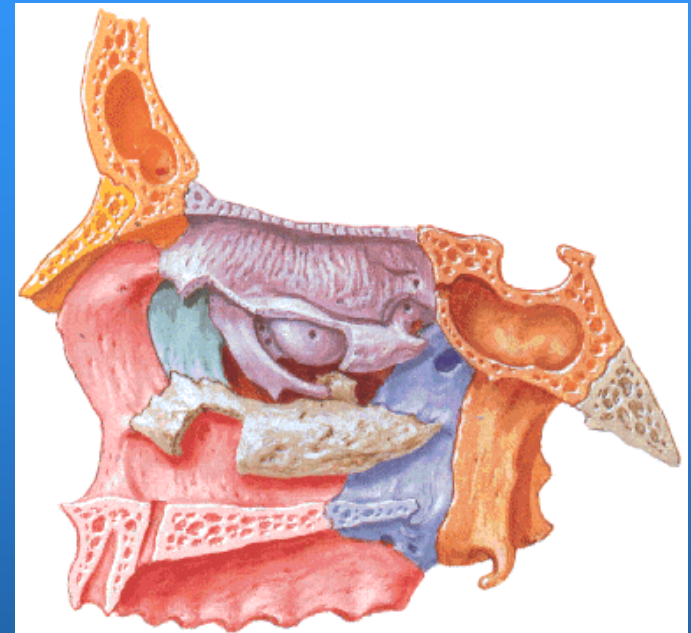
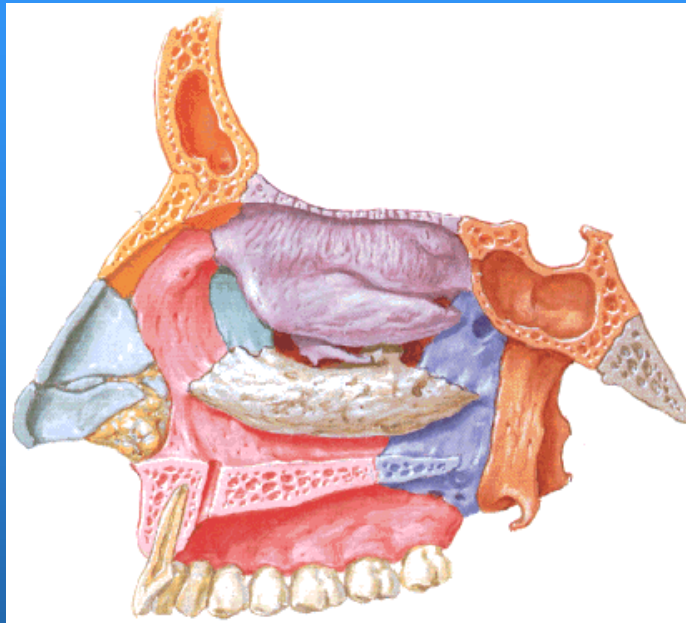


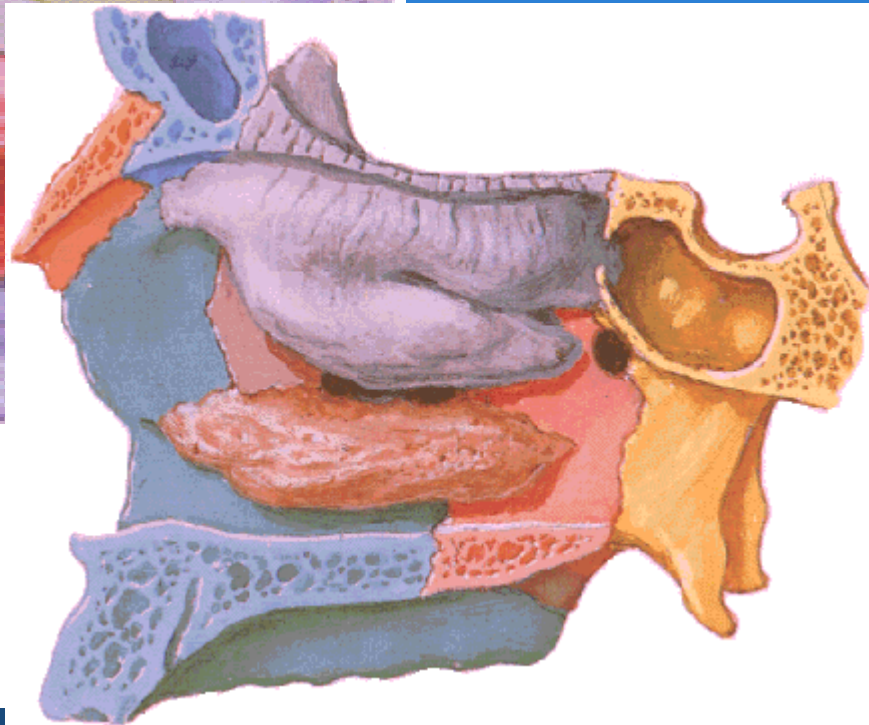
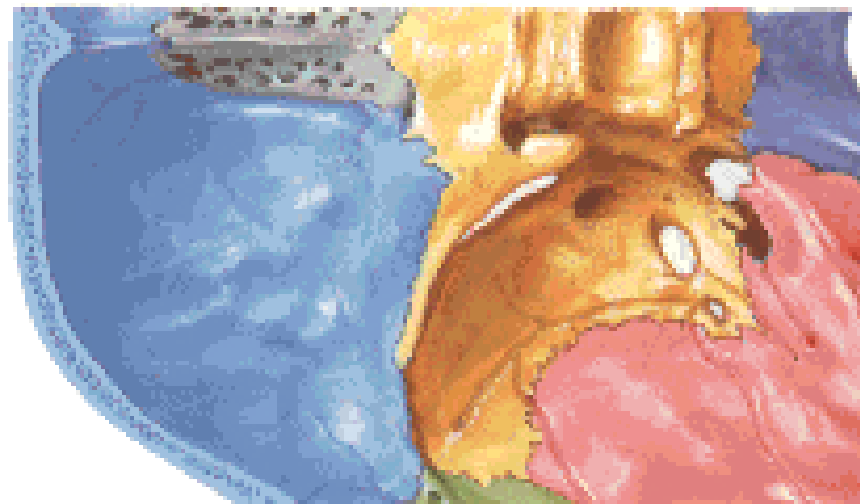






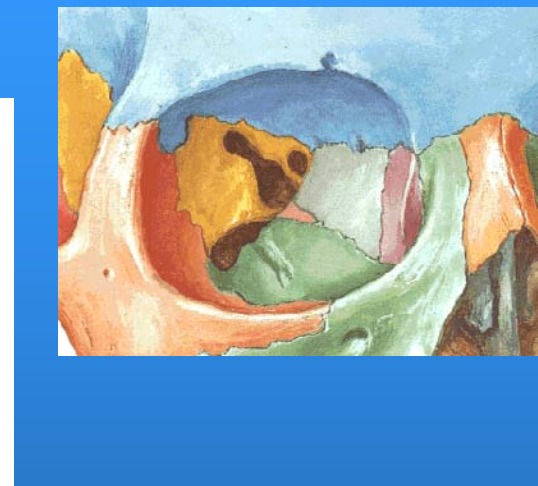
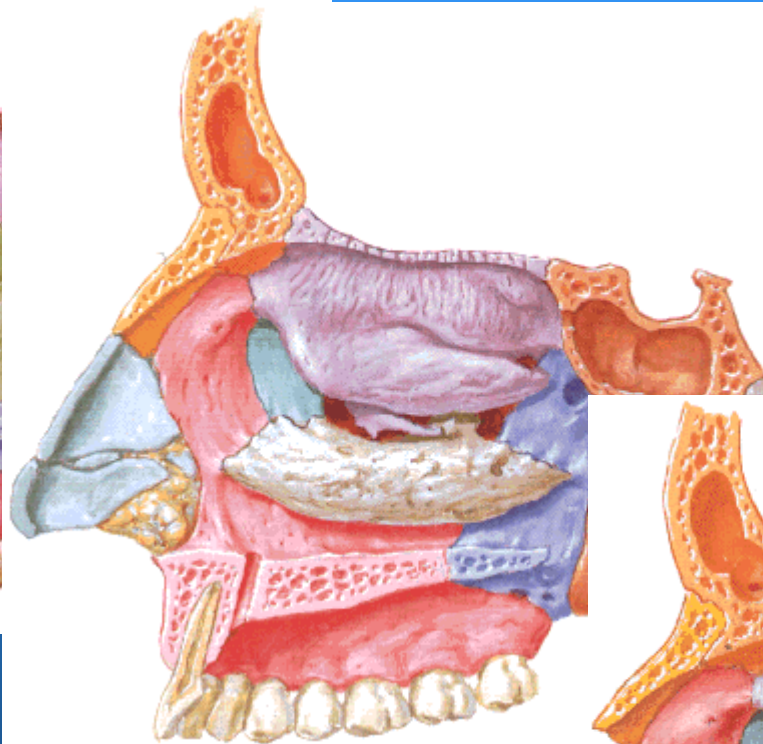
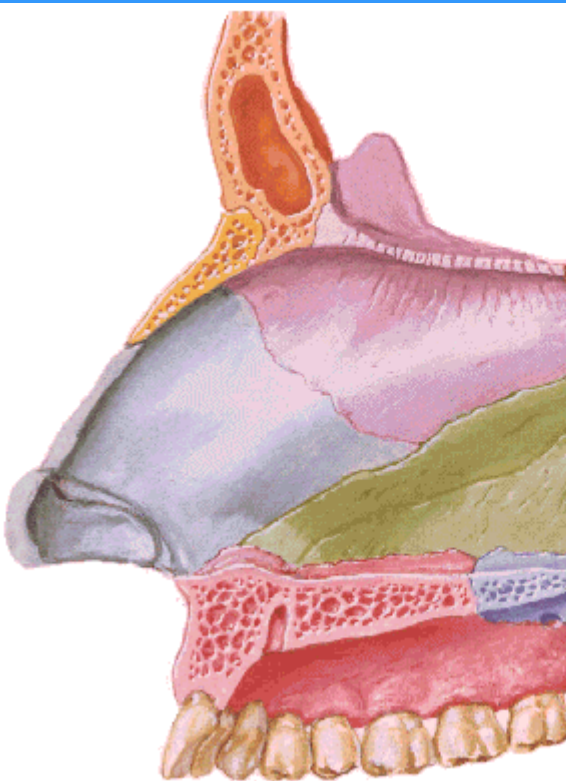
- **OS SPHENOIDALE**: corpus, alae minores, alae maiores, processus pterygoidei
- **OS ETHMOIDALE**: lamina cribrosa —, l. perpendicularis |, l. orbitalis /†\
- **OS PALATINUM**: lamina horizontalis, l. perpendicularis





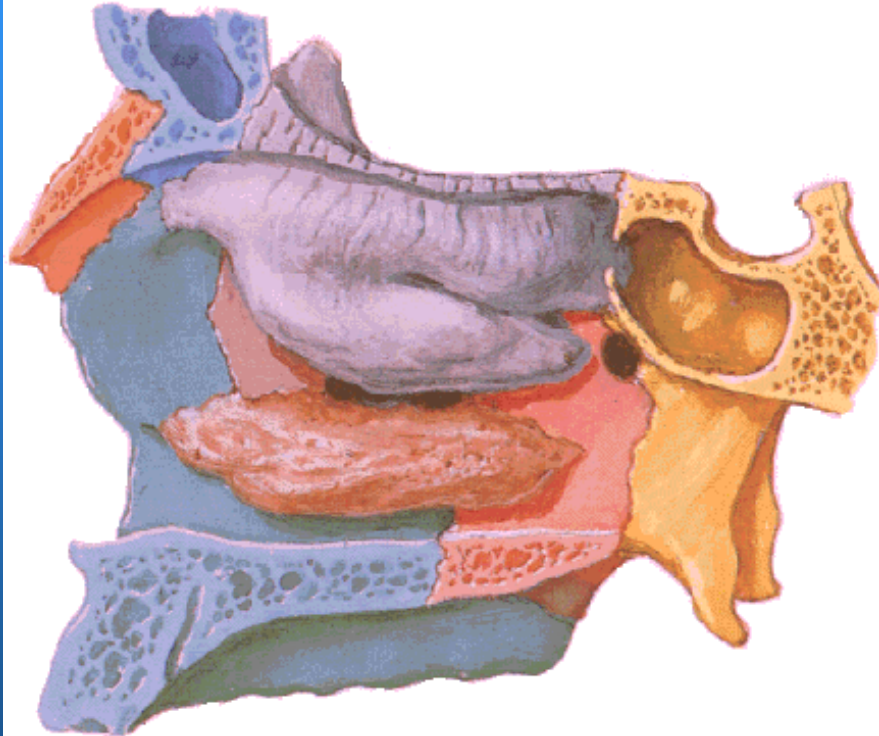
- OS ETHMOIDALE: lamina chribrosa —, l. perpendicularis |, l. orbitalis /†\

- OS ETHMOIDALE: lamina chribrosa —, l. perpendicularis |, l. orbitalis /†\



tu bi još trebala slika nosne šupljine sprijeda i straga

- OS SPHENOIDALE: corpus, processus pterygoidei



- OS SPHENOIDALE: **alae minores, alae maiores**

